



#Embassy2017



PASSIONATE PEOPLE • GUARANTEED OUTCOMES • AWARD-WINNING STUDY CENTRES



# Embassy Locations







## Contents

The Embassy English Promise and Guarantee	2
3 Reasons to ♥ Embassy	3
Passionate people	4
Passion for teaching	5
My Embassy English	6
Embassy onTrack	7
Embassy statistics	8
Our courses	10
Embassy for Travel and Culture	12
Embassy for Career Advancement	14
Embassy for Academic Success	16
Embassy English Centre and Course Details	18
Embassy English Study Centres:	
Brighton	20
Cambridge	22
Central London	24
Hastings	26
London Greenwich	28
Oxford	30
Boston	32
Fort Lauderdale	34
Long Beach	36
New York	38
San Diego	40
San Francisco	42
Toronto	44
Auckland	46
Brisbane	48
Melbourne	50
Surfers Paradise	52
Sydney	54
Accommodation	56
Terms and Conditions	58
Do more with Embassy	60
Practical Information	60



Our 2017 brochure comes to life on YouTube! See **student testimonials**, **centre videos** and more in our **#Embassy2017** playlist.



# 3 Reasons to Embassy

There are many reasons to love Embassy, from our amazing study centres to the relationships you'll create with fellow students and teachers. But we think these three truly set Embassy apart from the rest and are key reasons our students make Embassy English their choice!

## **Passionate People**

Our teachers and staff are passionate about what they do and will inspire you throughout your Embassy English experience.

## **Guaranteed Outcomes**

Guaranteed outcomes with our tuition refund offer and innovative tools such as My Embassy English Student Dashboard and Embassy onTrack.

## **Award-winning Study Centres**

The first global English language school to be awarded the Super Star Award in 2015 in recognition of receiving the Chain School of the Year five times.

## #BETL

Our **Bringing English to Life** activities challenge you to use every aspect of your new skills in fun and memorable ways. From **creating blogs** or **making videos** in your new city to **hosting cultural days** for your fellow students.

Check out [embassyenglish.com/BETL](http://embassyenglish.com/BETL) for the latest student projects!





---

# The Embassy Guarantee and Student Promise

---



## Guaranteed Outcomes

Embassy English is the only English language school to offer a **Money Back Guarantee!** We are so confident that you will reach your English Language goals that we provide a tuition refund\*.

- Take your entry level test **before** your arrival
- Use our **Embassy onTrack** tool to monitor progress with tests every 5 weeks
- **Personalised support** should you fall behind
- **Attend** class regularly, **complete** all coursework and **participate** fully
- If after all of the above you still do not reach your goal, you will be **eligible for a tuition refund**

\*Find out more online at [embassyenglish.com/guarantee](http://embassyenglish.com/guarantee)

We promise to give our students **guaranteed outcomes, invaluable skills and amazing experiences** that last a lifetime.

### With Embassy you will:

**Start**  
learning immediately

**Enjoy**  
a travel and learning experience like no other

**Achieve**  
your target English level guaranteed

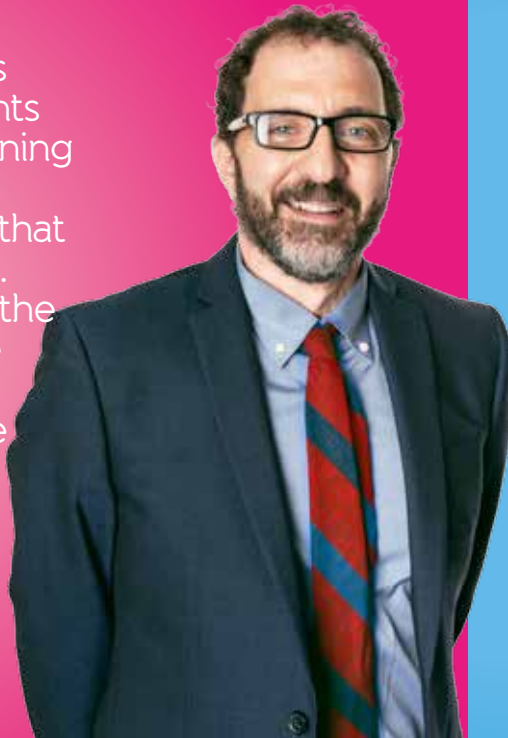
**Make**  
friends and achieve success to last a lifetime

# Passionate people

Our people are the real differentiator at Embassy English. More important than any award or innovation, our teachers and staff create unforgettable experiences for every Embassy student. Let's meet some of these Embassy superstars...

“What I love is giving students amazing learning and cultural experiences that last a lifetime. You can see the impact these have on the way they see the world.

JOHN LOGRASSO,  
CENTRE DIRECTOR,  
SAN FRANCISCO



“My class is a conversation, an interaction between me and my students. My students say it's like what they would find in a University... I encourage everyone to speak their mind.

JOHN AQUINO,  
EMBASSY ENGLISH  
TEACHER



“We are the first people a student sees when they arrive and the last when they leave. We facilitate their life while they are with us... we make their life here comfortable.

CORNELIA GARDNER,  
STUDENT SERVICES



“Our admissions team is dedicated to excellent service. We come into work each day and focus on making a difference for our students.

JAN FELL,  
DIRECTOR OF  
INTERNATIONAL  
ADMISSIONS  
CENTRES



# Passion for teaching



Everyone can learn English but how quickly, how easily and how well? What is really important in learning? What really affects and accelerates progress?

- 80% of what measurably affects your learning and your progress is you and your teacher\*
- 50% of what measurably affects your learning is what you bring: your motivation, your effort and participation, your attitude and aptitude
- 30% of what measurably affects your learning is your teacher(s): the rapport they have with you, the way they teach, actively involving every student in the lesson, the interest they take in each student individually, the challenges they set their students and the feedback they give, and of course, importantly, ensuring that lessons and learning are enjoyable
- Everything else accounts for just 20%.

Here at Embassy our teachers are keenly interested in measuring, monitoring and maximising your learning. They are equally interested in understanding what really affects your progress and how to help you achieve your goals.

VIC RICHARDSON, DIRECTOR OF ACADEMIC DEVELOPMENT



Meet these Embassy superstars and more on our #Embassy2017 YouTube playlist

*\*Teachers Make a Difference: What's the Research Evidence?*  
PROFESSOR JOHN HATTIE



# My Embassy English

It's all about **MEE!** My Embassy English **Student Dashboard** is a fully responsive one stop website for everything you need to succeed at Embassy.



The My Embassy English Student Dashboard – access on any device

## Getting started

Login before you arrive and access all the resources and information about your new school.

## Pre-Arrival Test

You will complete your pre-arrival test **before** your first day so you can start learning right away!

## Personal Profile and Social Media

Create a personalised profile that your classmates and teachers can see; add your social handles to allow you to connect with your new friends on your favourite networking sites such as WeChat, Facebook, Instagram and more!

## My School and City Guide

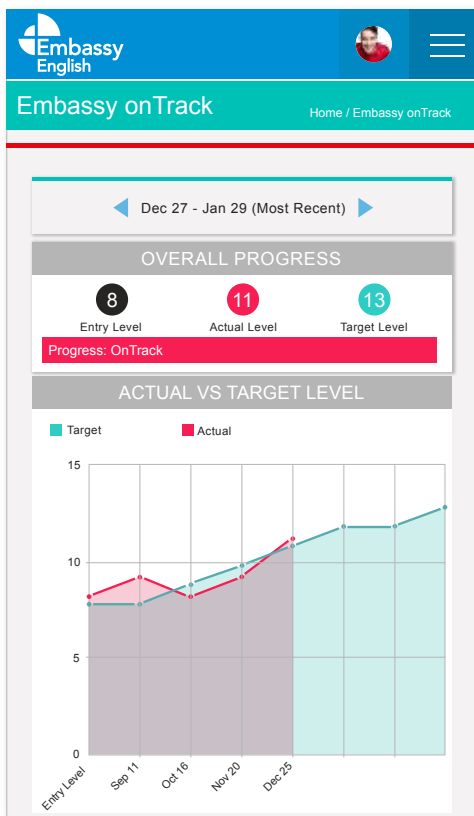
Meet the staff at your new school, learn about the facilities and discover your new city with maps, guides and information about activities.

## Learning Resources

Start learning straight away. Access the online workbooks, web 2.0 tools and apps selected to help you improve your grammar, vocabulary, speaking and listening skills, and even exam practice materials for IELTS and TOEFL.

# Embassy onTrack

Measure, monitor and maximise your progress using **Embassy onTrack**, our proprietary progress tracking tool.



## How it Works:

On your first day we create your online interactive Personalised Learning Plan:

- We use your entry level and length of study to calculate your 5-weekly progress targets
- We give you your first tutorial
  - discuss your reasons for learning English
  - what you want to achieve
  - set goals for your first 5-weekly progress cycle

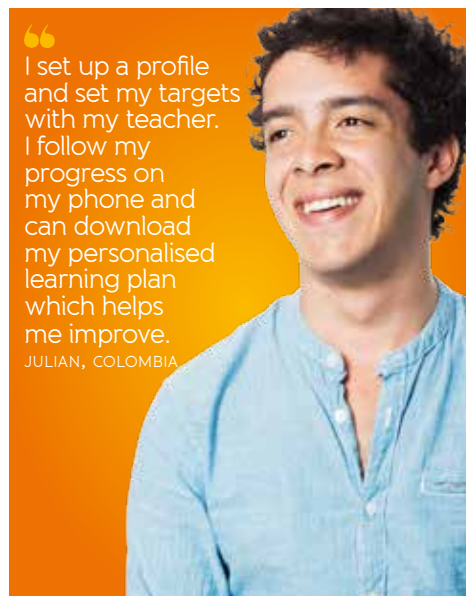
Every 5 weeks we give you:

- A progress test
- A progress tutorial
- A downloadable Progress report

If you are on track or above target we will discuss your goals for the next 5 weeks.

If you fall below target we intervene early and will help you get back on track with:

- Tutorials & coaching from your teacher
- Social programme & after school clubs
- Study skills and homework
- And even individual tuition



“I set up a profile and set my targets with my teacher. I follow my progress on my phone and can download my personalised learning plan which helps me improve.”  
JULIAN, COLOMBIA



“I track my progress, I can see my attendance, work and targets. There is a plan so I can see what I need to achieve next and easily see what I need to do. It is really helpful.”  
REENA, INDIA



18 schools  
worldwide

98  
university  
partners  
in 4 countries

94% of Embassy  
Pathways students progress  
to their chosen university

45 years  
teaching English

131  
student  
nationalities  
taught



95%  
overall student  
satisfaction rate

99% of students  
feel our staff are  
friendly  
and helpful

99%  
satisfaction  
rating  
for our teachers





Inspections by  
**11 industry  
leading  
accreditation  
and inspection  
bodies** across all  
our schools last year

**5 year  
grant of  
accreditation**  
by ACCET for our schools  
in the USA

The only  
**Super Star  
award**  
for receiving Chain School  
of the year 5 times

**Rated  
'excellent'**  
in all categories by the  
Independent Schools  
Inspectorate

**5 times**  
chain school of the year  
award winner

---

# Our courses

---

We have the right course to help you reach your English language goals, whatever your desired outcome.

## Our English courses

**Short-term flexible courses**, starting every week for 1 to 11 weeks.

**Long-term courses** of 12 weeks or more of study which feature our Embassy onTrack Progress Tracking and Money Back Guarantee.

**Customise your Embassy study:**

- Pick the course that works for you with weekly start dates at all centres for most courses
- Select the number of classes and weeks you want to study, plus specialist classes to suit your budget and desired study length.

Our **General English** language curriculum is at the heart of what we do with options for all levels:

**Standard programme**

Our core programme consists of 20 lessons per week following a syllabus designed to develop and improve your speaking, listening, reading and writing skills for everyday use.

**Standard Plus Programme - available in USA only**

Add 4 lessons to the Standard programme of teacher-led workshops, lectures and project work designed to enhance and improve your learning. This course is for students requiring a visa to study in the USA.

**Intensive programme**

Our intensive programme consists of 28 lessons per week. Add 8 lessons of your choice of engaging electives to deepen your knowledge or focus on your language, career or academic goals.

**Semi-intensive – available in Australia and New Zealand only**

Our Semi-intensive course consists of 24 lesson per week. Add 4 lessons of your choice to the standard programme - the minimum requirement for students wishing to apply for a student visa.

## Our curriculum

**Syllabus**

All courses follow an integrated language skills syllabus with specific outcomes for each level.

**Teaching methodology**

Our teachers follow an interactive methodology designed to make learning easier and lessons interesting, engaging and enjoyable.

**Resources and materials**

Books are included for all courses. My Embassy English Student Dashboard provides additional learning resources and apps while our teachers provide additional tools to help our students progress. All classrooms are wi-fi enabled and have interactive whiteboards.

**Bringing English to Life**

Students take their skills out of the classroom and into the real world. With our #BETL activities students are able to use their skills in engaging challenges such as blogging, videos, group projects and more.

**Progress**

Personal learning plans for all students with tutorial on day 1 and every 5 weeks to help students reach their goals.

## English for Travel and Culture

Our most popular courses, designed for all levels and with start dates every Monday. These courses are an ideal way to develop your confidence speaking and listening in everyday situations.

Choose between Standard and Intensive programmes.

### Courses

- General English
- Vacation & Travel English



## English for Career Advancement

Succeed in today's fast-paced global economy and enhance your CV with advanced language skills.

These courses include business communication, presentation and public speaking skills as well as report writing and interview techniques. In the USA you can put your English into practice with a placement at an organisation.

### Courses

- Business English
- English in Action - USA
- General English



## English for Academic Success

Prepare yourself for academic success with an internationally recognised qualification for admission to University or an Embassy course recognised by one of our educational partners.

We can help you reach your goals through the large number of partners we work with in North America and Australia.

### Courses

- English for Academic Purposes (EAP)
- University Pathways in North America
- Cambridge English exam preparation
- IELTS exam preparation
- TOEFL exam preparation







# English for Travel and Culture

Choose one of the following courses as a starter or refresher English course, or a study holiday or career break to improve your English language skills. Courses start every week in every centre.



## General English Standard Programme

Improve your ability to communicate effectively and have confidence in your use of the English language. Our dynamic approach to grammar, pronunciation and conversation using interactive software, individual and group work makes learning engaging and fun as well as developing your reading writing and listening skills.

### Reasons to choose this course

- Starts every Monday
- Suitable for all levels
- Suitable for entry to the USA under the ESTA visa waiver scheme
- Beginners accepted in some study centres
- Choose your course length according to your budget and goals
- Cost effective for long-term study

### Outcomes

- Improve your understanding of grammar and vocabulary
- Improve your listening ability and your confidence in speaking
- Communicate more effectively

## Vacation and Travel English

Take advantage of studying in the USA for only 4 days a week and use the long weekend to explore your destination or head out of town on an excursion. Follows the same curriculum as the Standard course.

### Reasons to choose this course

- Starts every Monday
- Suitable for entry to the USA under the ESTA visa waiver scheme
- Allows free time for leisure activities
- Spend time practising your English on your activities

## Standard Plus Programme

Add an additional 4 lessons to the Standard programme. The lessons will be in different formats including teacher-led workshops, lectures and project work all designed to enhance and improve your learning. Class sizes may be larger than 15. This is only available in the USA.

### Reasons to choose this course

- Starts every Monday
- Suitable for all levels
- Required for study visas into the USA

### Outcomes

- Improve English language skills in reading, writing, listening and speaking
- Communicate more effectively

### Outcomes

- Improve your understanding of grammar and vocabulary
- Improve your listening ability and your confidence in speaking
- Communicate more effectively



See our charts on pages 18-19 for full course availability and details

## Intensive or Semi-Intensive Programme

Choose an additional 4 or 8 classes to customise your course, enhance your learning and maximise your success. Semi-Intensive is only available in Australia and New Zealand.

Dependent on your needs and desired outcome you can choose from a wide range of electives in all centres, which can improve your career opportunities, help you with exam techniques or simply enhance your experience.

### Reasons to choose this course

- Starts every Monday
- Focus on the area you want or need to improve
- Gain additional skills for success in exams or career

## Customise your Intensive or Semi-Intensive Programme

Enhance your Embassy English experience with additional lessons to help you reach your goals.



### Communication Skills

Build your confidence in everyday situations as well as in public speaking and presenting



### Perfect your Pronunciation

Make your speaking easier to understand with focused speaking and listening activities



### Business English

Develop real world business language skills and be confident in the workplace



### Exam Preparation Classes

Add classes in IELTS or TOEFL to give you that extra knowledge on how to achieve top marks



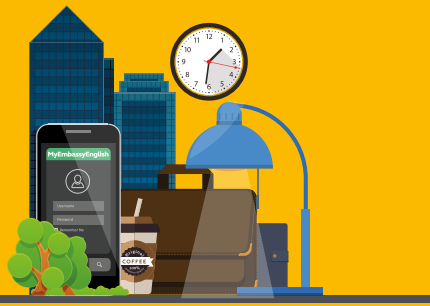
### Vocabulary

Increase and extend your vocabulary to give you more confidence



### Grammar Practice

Improve your understanding of English grammar and learn to speak and write more accurately



# English for Career Advancement

Succeed in today's fast-paced global economy with the right language skills and CV to demonstrate your achievements.

## Courses

- Business English
- English in Action USA



## Business English

### Intensive programme

Add 8 lessons of Business English to your 20 lesson General English programme to focus on the language skills to succeed in the workplace.

### Reasons to choose this course

- Enhance your CV
- Acquire the language skills commonly used in business
- Gain confidence in presenting
- Improve your formal writing skills

### Outcomes

- Increase vocabulary appropriate to the workplace
- Use digital applications for confident presentations
- Network effectively

## English In Action USA

What better way to prepare for life in the business world than spending time in a real-world office environment? With English In Action you will challenge your English skills by interacting with native speakers in an authentic business environment. Placements are in a wide range of sectors including marketing, law, not-for-profit and hospitality.

### Reasons to choose English in Action

- Spend 4 or 8 weeks in an American company either during or after your English course\*
- Interact with native speakers
- Add to your CV to boost your career opportunities back home
- Coaching in CV writing and interview techniques

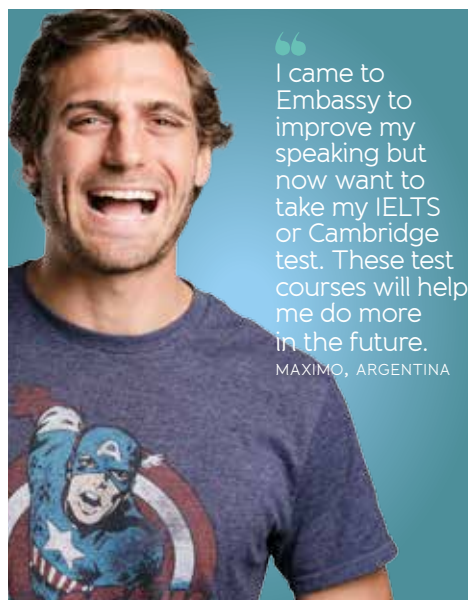
### Outcomes

- Write a good CV
- Gain useful interview techniques
- Communicate more effectively
- Improve your interpersonal skills

You must:

- Be Upper intermediate in both speaking and writing at time of placement
- Complete any English course for a minimum of 4 weeks prior to a placement
- Purchase Study Care insurance for the duration of the placement

\*Dependent on your visa and programme. Intensive programme students can only take a placement after their course.



“I came to Embassy to improve my speaking but now want to take my IELTS or Cambridge test. These test courses will help me do more in the future.”  
MAXIMO, ARGENTINA



See our charts on pages 18-19 for full course availability and details

# English in Action Sample Placements

Students will have to successfully pass an interview to be placed in any work environment which is only organised for them by their coordinator once they are in the USA.

## Sample placements USA:

**WEXY Radio Station**  
SECTOR: BROADCASTING



**Expedition America**  
SECTOR: TOURISM



**Philippines Consulate**  
SECTOR: MARKETING/RESEARCH



**Sincerely**  
SECTOR: TECHNOLOGY/APP DEVELOPMENT



**GENI- Global Energy Network Institute**  
SECTOR: RESEARCH/ NON-PROFIT



**The Wellington Hotel**  
SECTOR: HOSPITALITY



**Greater New England Minority Council**  
SECTOR: NON-PROFIT



**Signal Tribune**  
SECTOR: NEWSPAPER



**RRR Law Firm**  
SECTOR: LAW



**Solstiss**  
SECTOR: FASHION/ SHOWROOM



## BMW (SAN FRANCISCO)

BMW, a world renowned car brand, has a main dealership in downtown San Francisco. They specialise in sales, parts, and body work of BMW cars. Our students are placed in the parts, IT, or human resources department where they get to practise their English in a variety of topics. Students utilise their English with helping in customer service, computers, and assisting in other day to day tasks.

*"I had a lot of chance to talk with native speakers. The experience at BMW helped improve my English skill and knowledge about car and IT."*

HIROKI, JAPAN

## CUTLER AND ASSOCIATES (BOSTON)

A law firm in the heart of Boston specialising in personal injury, wage law, criminal defence, business law, and real estate. Our students assist attorneys with various tasks such as drafting letters and preparing various court documents, as well as day-to-day office tasks. Students also get to accompany the attorneys to court.

*"It was an excellent professional experience because it gave me a great insight on how a law firm works in the US, but most of all, I think that it was an amazing human experience. I learned a lot about American law and American culture."*

MANUELA, SWITZERLAND

## RESIDENCE INN BY MARRIOTT (SAN DIEGO)

Popular chain hotel across the United States operated by Marriott, one of the world's most well-known hotel brands. Our students are trained in all departments beginning with the front desk, human resources, sales, etc. After training, they can answer guest questions in person and over the phone.

*"I would recommend this experience to everyone, so Embassy should keep proposing the Residence Inn as a place for English in Action. The staff are really friendly and they consider you a real part of the hotel. I was really scared of answering the phone, but they trained me and now I can do it easily!"*

ALICE, ITALY



HYEONG JUN WI PARTICIPATED IN ENGLISH IN ACTION DURING HIS TIME AT EMBASSY NEW YORK IN 2016

## Q. What did you learn during your English in Action role?

A. I learned some really useful expressions by listening to people as they worked. I also learned how to make friends with Americans!

## Q. What kinds of tasks were you asked to help with during English in Action?

A. Tasks such as making phone calls, helping presentation, promoting social marketing.

## Q. How has your English improved during your English in Action programme?

A. I think my listening skills have improved the most. I could not understand people at first but gradually, over time, it was so much easier.

## Q. How is English in Action valuable for your career?

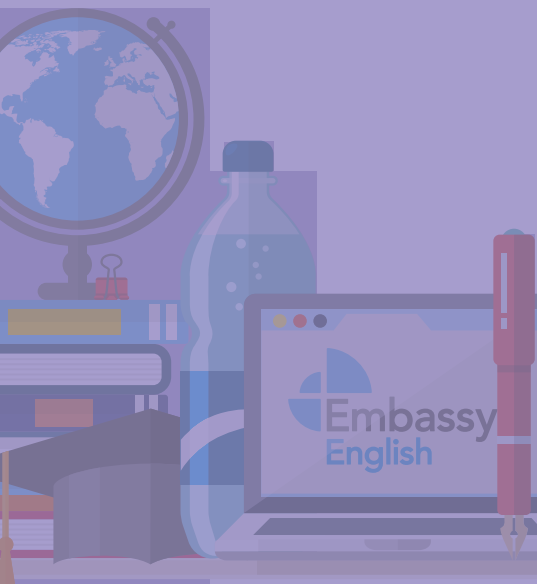
A. I think it will help me get a job in the future. The opportunity to be in an environment with native speakers was great - something I could not do in Korea - and gave me a lot of confidence. In one month I really improved my English.





# English for Academic Success

Preparing you for success at a college or university with either an internationally recognised qualification or an Embassy course recognised by 98 educational partners globally.



## International English Language Testing System (IELTS)

### Reasons to choose this course

- IELTS is the most commonly requested proof of level of English to study at universities in the UK, Australia, New Zealand and Canada
- Recognised by many government agencies for visa and immigration purposes

## Test of English as a Foreign Language (TOEFL)

### Reasons to choose this course

- TOEFL is the most widely recognised exam of English for admission at colleges and universities in the USA

## Cambridge English

First (FCE)  
Advanced (CAE)

### Reasons to choose this course

- Accepted in over 20,000 universities, employers and governments globally
- Suited to specific levels



See our charts on pages 18-19 for full course availability and details

## English for Academic Purposes (Australia)

Successful completion of this course will guarantee you entrance into one of our many Australian partner educational institutions.

### Reasons to choose this course

- Recognised by over 30 Australian universities and colleges
- IELTS waiver course, Embassy qualifying award
- 4 different stages dependent on your level and our partners' admissions requirements

### Outcomes

- Achieve University-level English
- Develop academic vocabulary and presentations skills
- Improve note taking during lectures
- Write summaries, essays and reports

EAP	CEFR level	Entry level	Exit level	Course length
stage 1	B1+	4.5	5.0	10 weeks
stage 2	B2	5.0	5.5	10 weeks
stage 3	B2+	5.5	6.0	10 weeks
stage 4	C1	6.0	6.5	10 weeks

32 educational and university partners including: Charles Sturt University, James Cook University, La Trobe University, University of Southern Queensland, TAFE New South Wales, Le Cordon Bleu, International College of Management, Skills Tech Australia, Martin, Australian Institute of Applied Sciences.

### English for Academic Purposes start dates 2017

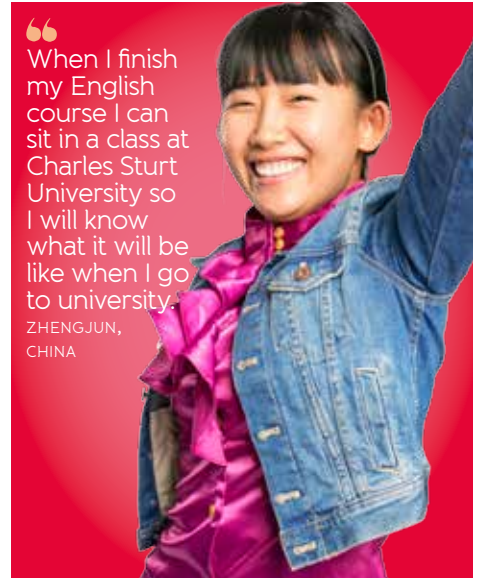
JANUARY 16	FEBRUARY 20	MARCH 27	MAY 1	JUNE 5
JULY 10	AUGUST 14	SEPTEMBER 18	OCTOBER 23	

# University Pathways in North America

Your route to university is made simple by studying English at an Embassy English study centre and gaining conditional acceptance to one of our many partners in the USA and Canada.

## Benefits:

- Most partners issue conditional admission waiving the TOEFL/IELTS score. So, an Embassy certificate is all you need
- Receive your conditional letter of acceptance before you begin your studies with Embassy
- Join one of our university partners from any Embassy study centre in North America
- Our Embassy onTrack tool will help you track your progress to ensure you reach your goals for university



“  
When I finish my English course I can sit in a class at Charles Sturt University so I will know what it will be like when I go to university.”

ZHENGJUN,  
CHINA



“  
I want to go to university after I study with Embassy. Because my school is on a University campus I am already making friends and learning things that will help me at university.”

MIJEONG PARK,  
SOUTH KOREA

1.  
Choose your Embassy English course and location



2.  
Choose your university and gain conditional admission



3.  
Achieve the English level needed for entrance into your chosen university



4.  
Transfer to your university



# Embassy English Centre and Course Details

Choose from a variety of courses and programme types at our 18 centres across the world.

PROGRAMME 1 lesson = 45 minutes in North America & UK/50 minutes in Australia & New Zealand	INTENSIVE	SEMI-INTENSIVE (AUSTRALIA & NEW ZEALAND ONLY)	STANDARD	STANDARD PLUS PROGRAMME (USA ONLY)	VACATION & TRAVEL (USA ONLY)
	28 lessons	24 lessons	20 lessons	24 lessons	16 lessons
<b>GENERAL ENGLISH</b>	20 lessons General English + 8 electives	20 lessons General English + 4 electives	20 lessons General English	20 lessons General English + 4 teacher-led workshops	16 lessons General English
<b>GENERAL ENGLISH-BEGINNERS</b>	20 lessons General English + 8 electives	-	-	-	-
<b>BUSINESS ENGLISH</b>	20 lessons General English + 8 lessons Business English	20 lessons General English + 4 lessons Business English	-	-	-
<b>COMMUNICATION SKILLS</b>	20 lessons General English + 8 lessons Communication Skills	20 lessons General English + 4 lessons Communications Skills	-	-	-
<b>CAMBRIDGE EXAM FCE</b>	20 lessons Exam preparation + 8 electives	-	20 lessons Exam preparation	20 lessons Exam Preparation + 4 teacher-led workshops	-
<b>CAMBRIDGE EXAM CAE</b>	20 lessons Exam preparation + 8 electives	-	20 lessons Exam preparation	20 lessons Exam preparation + 4 teacher-led workshops	-
<b>IELTS EXAM PREPARATION</b>	20 lessons Exam preparation + 8 electives	-	20 lessons Exam preparation	-	-
<b>GENERAL ENGLISH WITH IELTS EXAM PREPARATION AS ELECTIVE</b>	20 lessons General English + 8 Exam preparation lessons	-	-	-	-
<b>TOEFL EXAM PREPARATION</b>	20 lessons Exam preparation + 8 electives	-	20 lessons Exam preparation	20 lessons Exam preparation + 4 teacher-led workshops	16 lessons Exam preparation
<b>GENERAL ENGLISH WITH TOEFL EXAM PREPARATION AS ELECTIVE</b>	20 lessons General English + 8 Exam preparation lessons	-	-	-	-
<b>ENGLISH FOR ACADEMIC PURPOSES (EAP)</b>	28 lessons of EAP	-	-	-	-
<b>ENGLISH IN ACTION (SUPPLEMENTARY TO THE ENGLISH CLASSES)</b>	28 lessons + 4 to 8 week placement in a US company only after the course	-	20 lessons + 4-8 week placement in a US company	24 lessons + 4-8 week placement in a US company	16 lessons + 4-8 week placement in a US company

For full details on number of hours of study per week please check our website where these are clearly stated per course

## English Proficiency levels

LEVELS	CEFR	STUDY WEEKS <sup>1</sup>	DESCRIPTION	EXAMS		
				IELTS	TOEFL iBT	Cambridge
Proficient	C2	N/A	You can use English with ease and fluency. Improve by increasing your understanding of the nuances of the language and engaging in independent reading to develop your vocabulary further.	7.0 - 8.0	94 - 109	CPE
Advanced	C1+	12 - 15	You can use English in a range of culturally appropriate ways. Improve by extending your vocabulary and refining your use of style and register.	6.5 - 7.0	60 - 93	CAE
	C1	12 - 15		6.0 - 6.5	60 - 93	
Upper intermediate	B2+	10 - 12	You can use English effectively. Improve by learning to discuss, argue and express opinion in a culturally acceptable way. Refine your use of grammar and vocabulary.	5.5 - 6.0	35 - 59	FCE
	B2	10 - 12		5.0 - 5.5	35 - 59	
Intermediate	B1+	10 - 12	You can speak English with some confidence. Improve by developing your fluency, your understanding of grammar and by widening your vocabulary.	4.5 - 5.0	31 - 34	PET
	B1	10 - 12		4.0 - 5.0	31 - 34	
Pre-intermediate	A2	10-12	You can communicate in a range of everyday social and travel contexts. Improve by developing your speaking, grammar and vocabulary.	3.0 - 4.0	0 - 31	KET
Elementary	A1	8-10	You can understand language used in everyday situations if the speaker speaks slowly and clearly. Improve by developing your listening and vocabulary. General English, Language Semester Abroad, Vacation and Travel English.	2.0 - 3.0	-	-
Beginner	N/A	6 - 8	You can speak and understand English in a very limited way.	-	-	-

<sup>1</sup> "Study weeks" refers to the number of weeks you need to study to progress to the next level.

COURSE LENGTH	START DATES	LEVELS	CLASS SIZE	AVAILABLE
1-50 weeks	Every Monday	Elementary - Advanced	max. 15 (except 4 teacher-led lessons on Standard Plus programme)	All centres
min. 4 weeks	Every Monday	Beginner	max. 15	UK: All centres except London Greenwich USA: Boston, New York, San Diego Canada: Toronto Australia: Melbourne
min. 2 weeks	Every Monday	Intermediate - Advanced	max. 15	UK: Brighton, Central London, London Greenwich US: all centres Canada: Toronto Australia: all centres
min. 2 weeks	Every Monday	Intermediate - Advanced	max. 15	All centres – except Hastings
10 or 11 weeks dependent on start	See exam dates	Intermediate	max. 15 (except 4 teacher-led lessons on Standard Plus programme)	UK: Oxford USA: San Diego Australia: Melbourne, Sydney
10 or 11 weeks dependent on start	See exam dates	Advanced	max. 15 (except 4 teacher-led lessons on Standard Plus programme)	UK: Cambridge USA: San Diego Australia: Melbourne, Sydney
min. 2 weeks	Every Monday	Intermediate - Advanced	max. 15	UK: Brighton, Central London, London Greenwich, Oxford Australia: all centres New Zealand: Auckland USA: San Diego
min. 2 weeks	Every Monday	Intermediate - Advanced	max. 15	UK: all centres except Hastings Australia: all centres Canada: Toronto New Zealand: Auckland
min. 2 weeks	Every Monday	Intermediate - Advanced	max. 15 (except 4 teacher-led lessons on Standard Plus programme)	USA: Boston, New York, San Diego, San Francisco
min. 2 weeks	Every Monday	Intermediate - Advanced	max. 15	USA: Fort Lauderdale, Long Beach
1 – 4 x 10 week courses dependent on entry and exit level required	See EAP dates	Intermediate - Advanced	max. 18	Australia: Brisbane, Melbourne, Sydney
min. 4 week course + 4-8 week placement in a US company during or after the course depending on visa and programme	Every Monday	Intermediate - Advanced must be Upper-intermediate at time of placement	max. 15 during English lessons per chosen course/programme, except 4 teacher-led lessons on Standard Plus	USA: all centres

## Cambridge Exam Dates

EXAM	AVAILABLE	WEEKS	START DATE	END DATE	EXAM DATE
JANUARY 2017					
FCE	Melbourne, Sydney	10	3 January	10 March	11 March
CAE	Melbourne, Sydney	10	3 January	10 March	11 March
MARCH 2017					
FCE	Melbourne, Sydney	10	27 March	2 June	3 June
	Oxford	10	27 March	2 June	6 June
	San Diego	10	27 March	2 June	6 June
CAE	Melbourne, Sydney	10	27 March	2 June	3 June
	Cambridge	10	27 March	2 June	7 June
	San Diego	10	27 March	2 June	7 June
JUNE 2017					
FCE	Melbourne, Sydney	10	19 June	24 August	24 August
CAE	Melbourne, Sydney	10	19 June	25 August	25 August
SEPTEMBER 2017					
FCE	Melbourne, Sydney	11	11 September	24 November	28 November
	Oxford	11	25 September	8 December	9 December
	San Diego	10	18 September	24 November	28 November
CAE	Melbourne, Sydney	11	11 September	25 November	25 November
	Cambridge	10	25 September	1 December	2 December
	San Diego	10	18 September	24 November	29 November



# Embassy Brighton



Experience the best of culture, history, and beach life in one of England's most unique seaside cities. Embassy Brighton is located within Bellerbys College, so you will experience the benefits of a large student campus and the personal attention of Embassy.

## Residential accommodation

- Voyager House: Year-round on-campus residence for single, half-board or full-board, en-suite rooms (age 16+)
- Britannia Study Hotel: Year-round residence in a stylish study hotel in single, self-catering, en-suite rooms (age 18+)

## Homestay

- Available across the Brighton area
- Single and twin rooms
- Half-board (14 meals per week)
- Full-board option (age 16+)
- Bed and breakfast option (age 18+)

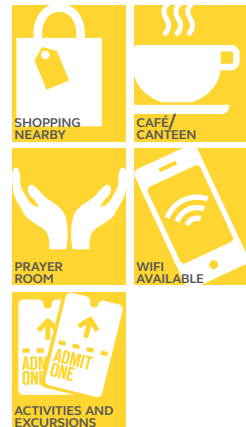
## Reasons to choose Embassy Brighton

- A modern and unique building with impressive atrium, and contemporary design – unlike any other in Brighton.
- Fantastic facilities match the design – with cool cybercafé, student lounge and hangout areas
- Mingle with other students from Bellerbys College who share the campus
- Enjoy affordable breakfasts or lunches at the restaurant located onsite

## Courses

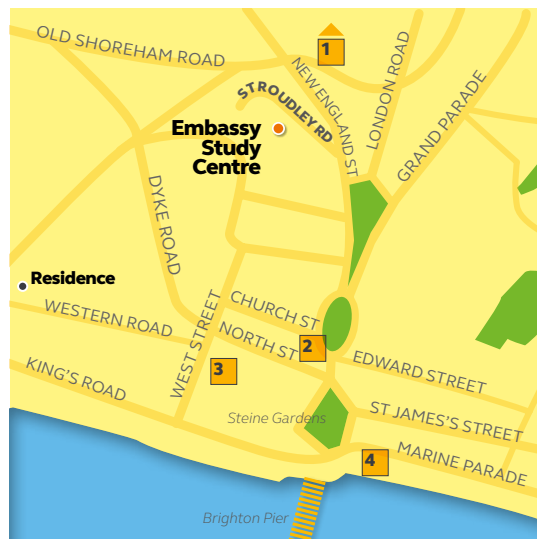
- Intensive Programme
- Standard Programme
- Beginner English
- Business English (elective)
- Communication Skills (elective)
- Exam Preparation: IELTS (core and elective)
- One-to-one lessons

## EMBASSY BRIGHTON FACILITIES AT A GLANCE:



“We share the premises with Bellerbys College and are able to have that family atmosphere but with the advantages of sharing a large city campus.”

MATTHEW JONES,  
ACADEMIC MANAGER,  
BRIGHTON



- 1 DEVIL'S DYKE - OUTSTANDING NATURAL BEAUTY SPOT
- 2 ROYAL PAVILION AND BRIGHTON DOME
- 3 THE LANES - HISTORIC SHOPPING QUARTER
- 4 BRIGHTON SEA LIFE CENTRE

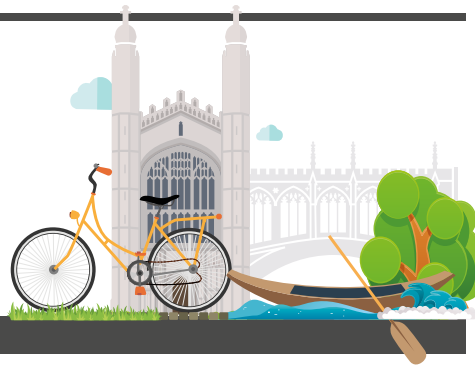


“

After class me and my friends often go to the sea. I really like Brighton!

MISAKI, JAPAN

# Embassy Cambridge



Embassy Cambridge is located in a quaint, century-old house that provides an instant feeling of family. In addition to its rich academic history, Cambridge also boasts a lively nightlife scene, shops and restaurants, and is just a quick train ride to the capital, London.

## Residential accommodation

- Year-round residence offering single self-catering en-suite rooms (age 18+)

## Homestay

- Available throughout the Cambridge area
- Single/twin rooms
- Bed-and-breakfast option (age 18+)
- Half-board (14 meals per week)
- Full-board option (age 16+)

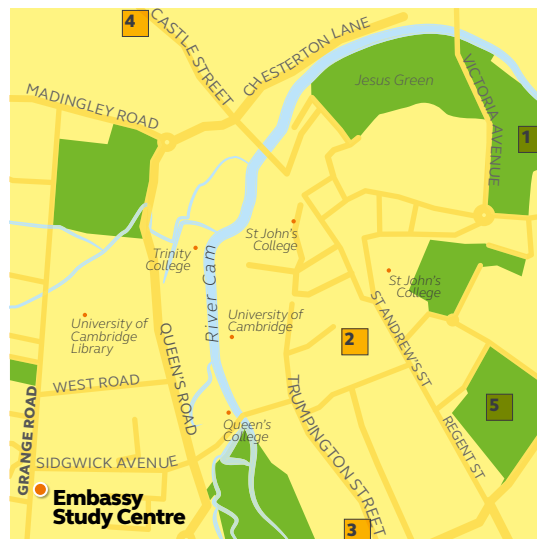
## Reasons to choose Embassy Cambridge

- Located in a charming quiet residential suburb of Cambridge with large outdoor patio and garden
- Hire a bike and join in one of the city's favourite activities. Plenty of space to park your bike at the school and a bike hire shop nearby
- Experienced centre in preparing students for the Cambridge English Advanced exams (CAE)
- An onsite cafeteria with a choice of meals to suit your budget
- Travel to school by bus, bicycle or on foot

## Courses

- Intensive Programme
- Standard Programme
- Beginner English
- Exam Preparation: CAE (core), IELTS (elective)
- Communication Skills (elective)
- One-to-one lessons

## EMBASSY CAMBRIDGE FACILITIES AT A GLANCE:



- 1 MIDSUMMER COMMON - HOME TO FAIRS AND EVENTS
- 2 CAMBRIDGE CORN EXCHANGE, FAMOUS CONCERT/EVENT VENUE
- 3 FITZWILLIAM MUSEUM
- 4 STUDY INN STUDENT RESIDENCE
- 5 PARKER'S PIECE - HOME TO MANY OF THE CITY'S EVENTS





“

My school is a big cosy house so you are very involved in Embassy life and close to your friends and teachers.

SANTIAGO, COLOMBIA



# Embassy Central London



In the heart of the capital, Embassy Central London is perfect for a true city experience. Located on the campus of the University of Law, you'll benefit from interacting with university students from around the world, as well as everything London has to offer on your doorstep!

## Residential accommodation

- Depot Point: Year-round residence within walking distance to the school offering single self-catering en-suite rooms (age 18+)
- Stay Club: Year-round residence located in a lively area within 15 minutes of the centre by tube, offering single and twin occupancy self-catering en-suite rooms (age 18+)
- The Curve: Summer residence located close to the Thames and the Tower of London, with single self-catering en-suite rooms (age 18+)

## Homestay

- Available throughout the London area (age 18+ only)
- Single/twin rooms
- Half-board (14 meals per week)
- Bed and breakfast option
- Quality agencies registered with the British Council provide our homestay accommodation

## Reasons to choose Embassy Central London

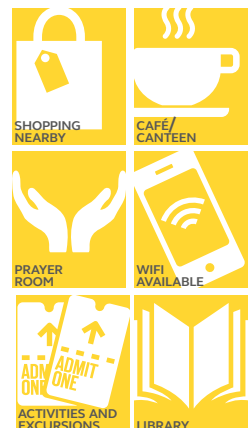
- Situated on the University of Law campus you can mingle with university students, even join a language exchange as well as taking advantage of the great facilities located on the campus
- Located in the popular area of Bloomsbury which is home to several London universities makes this a bustling student hub
- A variety of accommodation options to suit independent students – one of the residences is walking distance to the centre
- An onsite café for breakfast, lunch and snacks – or choose one of the many locations in the adjacent streets
- Easy access to Oxford Street for some lunchtime shopping

\*Minimum age 18

## Courses

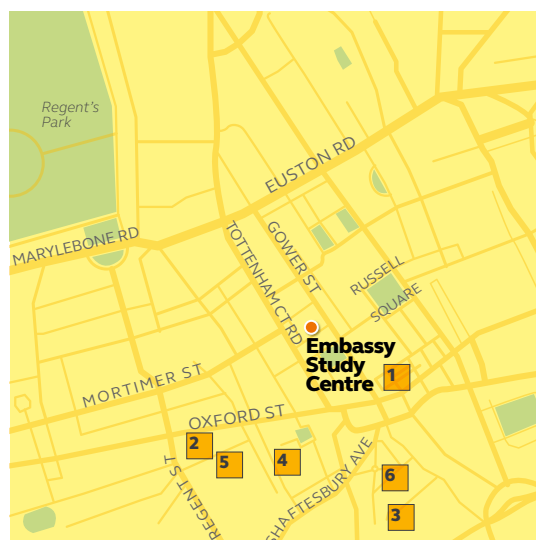
- Intensive Programme
- Standard Programme
- Beginner English
- Business English (elective)
- Communication Skills (elective)
- Exam Preparation: IELTS (core and elective)
- One-to-one lessons

EMBASSY CENTRAL LONDON FACILITIES AT A GLANCE:



“Central London is the hub of London, you have everything you need in close proximity. Even though we're in the city we're like a family here.”

ELEANOR MALÝ,  
CENTRE DIRECTOR,  
CENTRAL LONDON



- 1 THE BRITISH MUSEUM
- 2 OXFORD STREET/REGENT STREET
- 3 COVENT GARDEN
- 4 SOHO - GREAT FOR RESTAURANTS
- 5 CARNABY STREET - POPULAR FOR SHOPPING
- 6 LEICESTER SQUARE - CINEMA/ THEATRE DISTRICT





“

My teacher is always interested in you, that you learn, that you feel comfortable and that you feel confident about your English.

JESSICA, COLOMBIA



# Embassy Hastings



At Embassy Hastings you will experience life in a traditional English seaside town. Our study centre is located close to the beach and the newly-opened pier and within easy reach of its historic Old Town. You will be in a supportive family-style atmosphere and benefit from the experience of Embassy's first school.

## Homestay

- Available across the Hastings area
- Single/twin rooms
- Half-board (14 meals per week)
- Full-board option (age 16+)

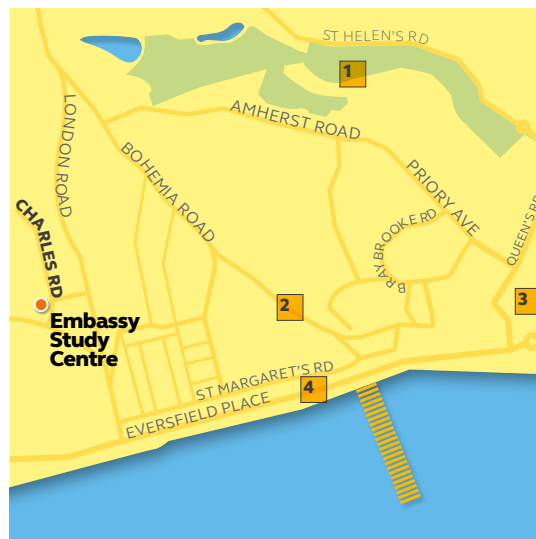
## Reasons to choose Embassy Hastings

- Our first Embassy centre is in a charming heritage building with plenty of space for BBQs, sports or simply hanging out with new friends
- Great for younger students with most host families within walking distance
- A very experienced team runs this centre and ensures a pleasant community feel
- Our most economical study centre in the UK with an affordable canteen for lunch
- Fantastic activities programme to suit all ages

## Courses

- Intensive Programme
- Standard Programme
- Beginner English
- One-to-one lessons

## EMBASSY HASTINGS FACILITIES AT A GLANCE:



- 1 ALEXANDRA PARK AND CAFÉ
- 2 HASTINGS MUSEUM AND ART GALLERY
- 3 HASTINGS CASTLE
- 4 WHITE ROCK THEATRE - MUSIC AND EVENTS VENUE





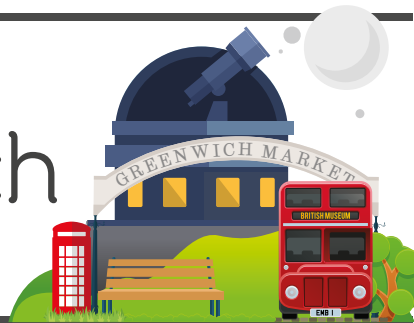
“

The classes are small so the teacher can focus on everyone and we can easily help each other.

ONSINEE, THAILAND



# Embassy London Greenwich



Located just 20 minutes from the centre of London, Embassy Greenwich is situated on Bellerbys College's modern campus. Enjoy living in historic Greenwich, a charming and friendly town, full of interesting restaurants, beautiful parks, historic market and walking distance from the Thames.

## Residential accommodation

- Live alongside British and international students in the McMillan year round on-campus residence
- Year-round - single/twin self-catering, en-suite rooms (age 18+)
- Year-round single/twin, half-board or full-board, en-suite rooms (age 16+)

## Homestay

- Available throughout the London area
- Single and twin rooms
- Half-board (14 meals per week)
- Full-board option (age 16+)
- Bed and breakfast option (age 18+)

## Reasons to choose Embassy London Greenwich

- A slower pace of London life in the beautiful suburb of Greenwich with historic buildings, shops and markets
- A secure gated student community with residence located next to the study centre makes this ideal for younger students
- Meet students from Bellerbys College who also share the campus and enjoy the study facilities
- We can cater for all your food requirements at the onsite restaurant

## Courses

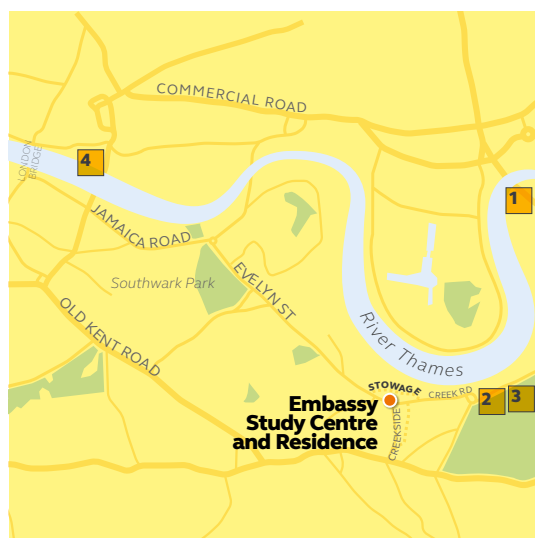
- Intensive Programme
- Standard Programme
- Business English (elective)
- Communication Skills (elective)
- Exam preparation: IELTS (core and elective)
- One-to-one lessons

## EMBASSY LONDON GREENWICH FACILITIES AT A GLANCE:



“Greenwich is a fun town and we have the benefit of being a small team within a larger campus so students get the best of both worlds really.”

ELEANOR MALÝ,  
CENTRE DIRECTOR,  
CENTRAL LONDON



- 1 O2 ARENA - MUSIC AND EVENTS VENUE
- 2 NATIONAL MARITIME MUSEUM
- 3 GREENWICH MARKET - HISTORIC MARKET SET WITHIN A WORLD HERITAGE SITE
- 4 TOWER OF LONDON



“ We go out and talk to native speakers and interview them which I find interesting and fun.

WONSIK, KOREA

# Embassy Oxford



The quintessential English university experience can be found in Oxford, the oldest and most prestigious university city in the UK. Our campus is located in the heart of historic Oxford, balancing the majesty of history with the excitement of modern life.

## Residential accommodation

- Residences available within walking distance of the school
- Oxford Mansions and Blue Boar annexe: single/double occupancy en-suite self-catering rooms (age 18+)
- Blue Boar residence: twin occupancy self catering, en-suite (age 18+)

## Homestay

- Available across the Oxford area
- Single/twin rooms
- Half-board (14 meals per week)
- Full-board option (age 16+)
- Bed-and-breakfast option (age 18+)

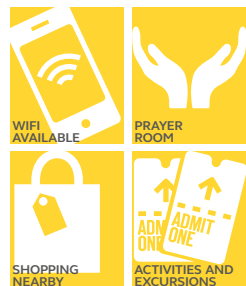
## Reasons to choose Embassy Oxford

- Located right in the centre of Oxford in a historic building with a contemporary design inside
- Experienced teachers to help you succeed at the Cambridge English FCE qualification
- A variety of accommodation options to suit your budget with a couple of residences within walking distance of the centre

## Courses

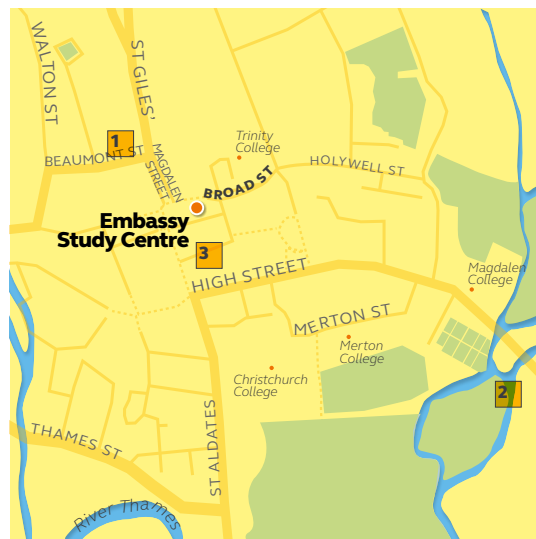
- Intensive Programme
- Standard Programme
- Beginner English
- Communication Skills (elective)
- FCE (core) IELTS (core and elective)
- One-to-one lessons

## EMBASSY OXFORD FACILITIES AT A GLANCE:



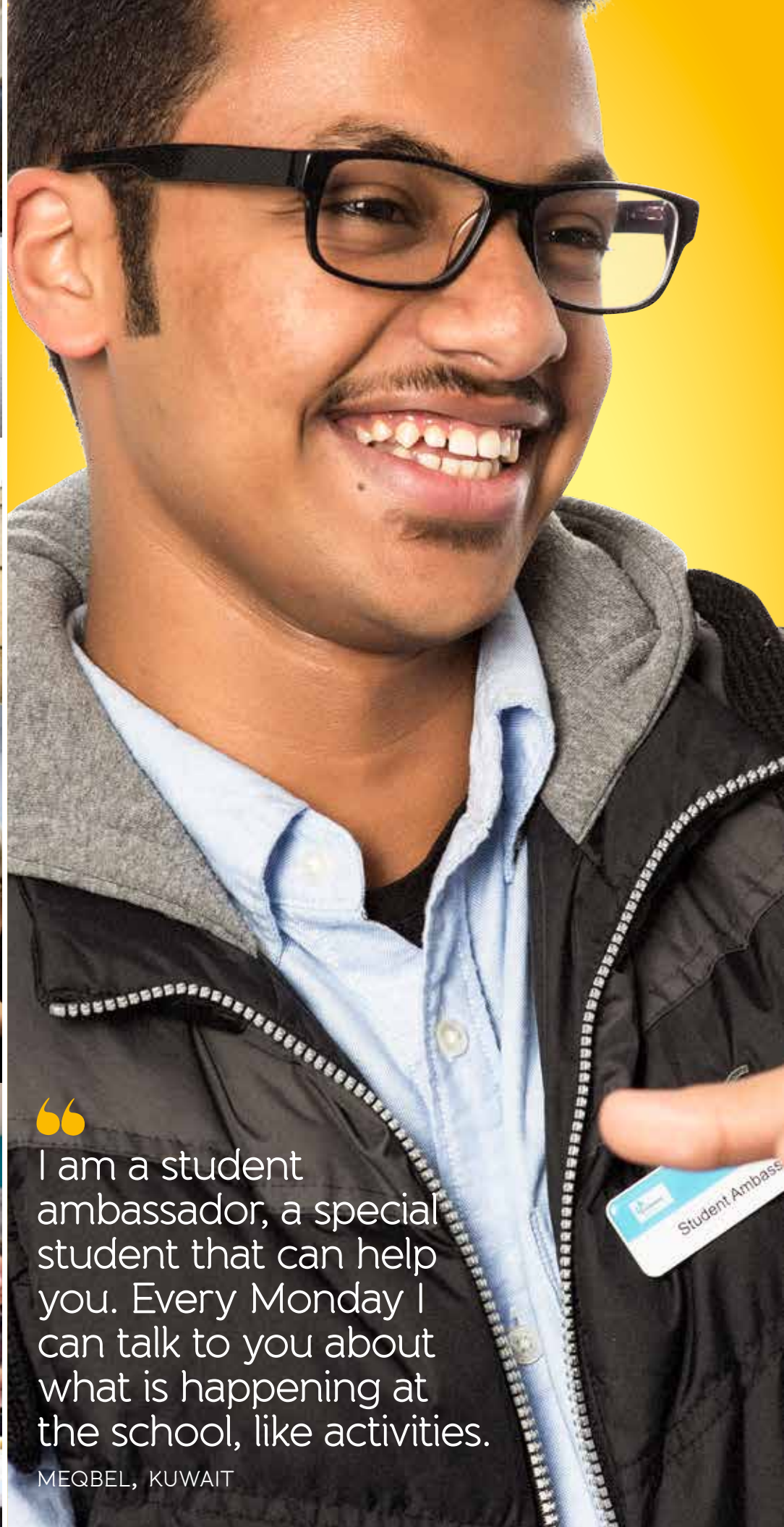
“At Oxford we try and have a good time while ensuring our students are reaching their goals, interacting and practising their English everyday.”

FABIO DA SILVA MOORE,  
FINANCE AND ENROLMENT  
ADVISOR, EMBASSY OXFORD



- 1 ASHMOLEAN MUSEUM OF ART AND ARCHAEOLOGY
- 2 O2 ACADEMY OXFORD - MUSIC VENUE
- 3 COVERED MARKET - INDOOR BAZAAR FOR ARTISAN GROCERS AND BOUTIQUE CLOTHING





“

I am a student ambassador, a special student that can help you. Every Monday I can talk to you about what is happening at the school, like activities.

MEQBEL, KUWAIT



# Embassy Boston



As one of the oldest cities in the USA, Boston is a great place to experience American history and culture. Embassy Boston is located in the heart of the city, close to museums and famous landmarks, with excellent opportunities for shopping, eating and socialising!

## Residential accommodation

- Minimum age 18
- Single/twin rooms 25 minutes from school
- En-suite and shared bathrooms available
- One of our 2 residences has a fitness centre and café
- Self-catering student apartment option available

## Homestay

- Available across the greater Boston area
- Single/twin rooms
- Half-board (14 meals per week)
- Bed and breakfast option

## Reasons to choose Embassy Boston

- A city famous for its universities, you can expect world-class education in our modern centre located in downtown Boston
- Our centre director, Linda, has been welcoming students for many years so she knows exactly how to make you feel at home and ensure you make the most of your time with us
- Study TOEFL with our great teaching team, even on the Vacation & Travel course

## Courses

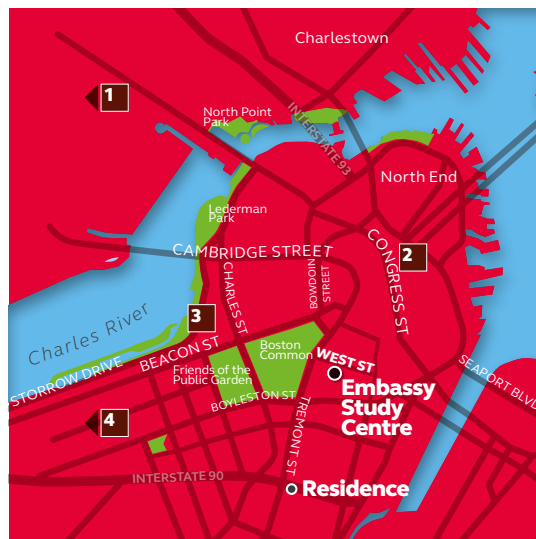
- Intensive Programme
- Standard Programme
- Standard Plus Programme
- Beginner English
- Communication Skills (elective)
- Business English (elective)
- English in Action
- Exam Preparation: TOEFL (core)
- Vacation and Travel English
- One-to-one lessons

## EMBASSY BOSTON FACILITIES AT A GLANCE:

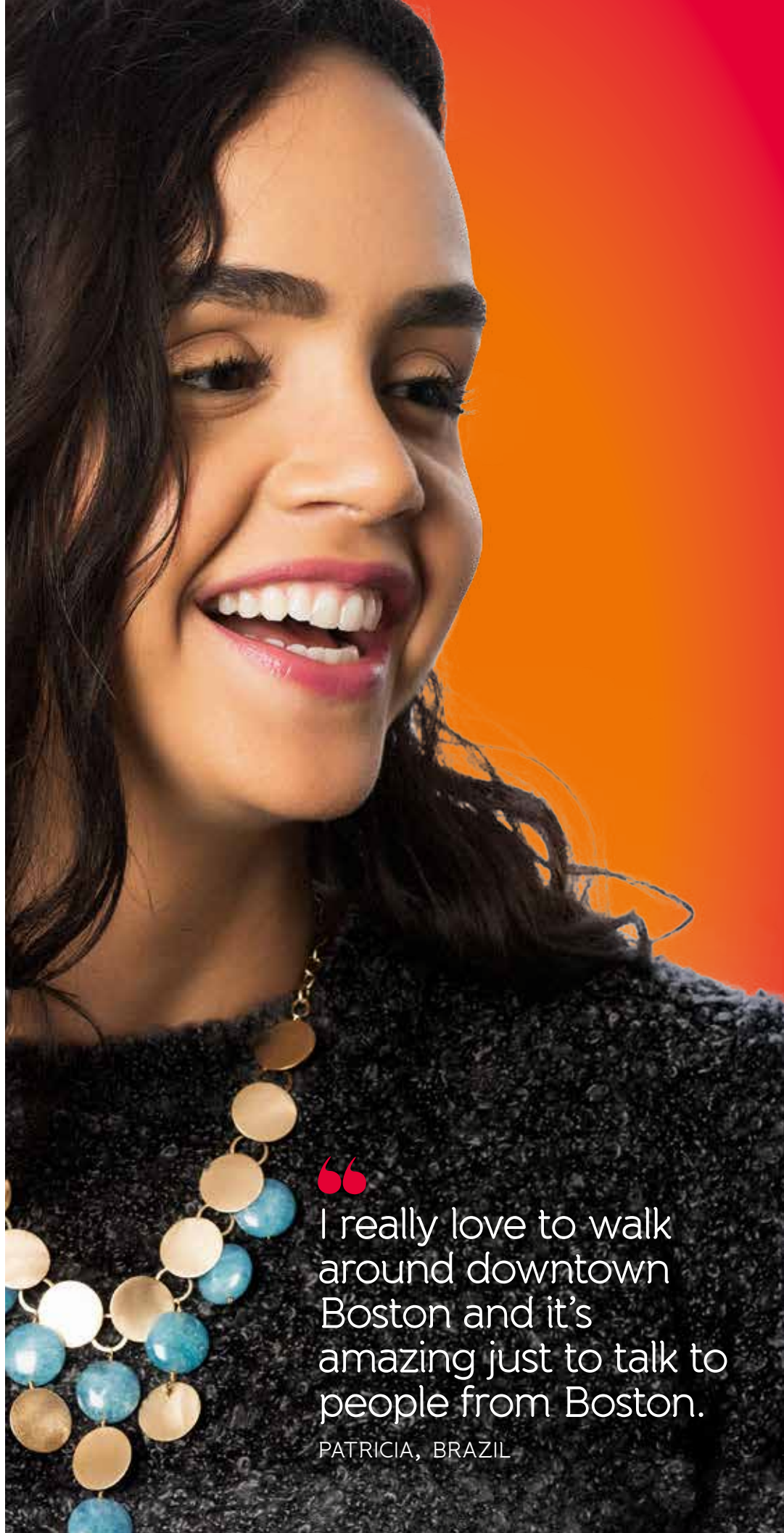


“What makes our centre great is our people and our technology.”

LINDA WALSH,  
CENTRE DIRECTOR,  
BOSTON



- 1 HARVARD UNIVERSITY AND MIT
- 2 FANEUIL HALL AND QUINCY MARKET - GREAT SHOPPING
- 3 ESPLANADE - BEAUTIFUL RIVERSIDE SETTING FOR FREE CONCERTS AND MOVIES
- 4 FENWAY PARK - HOME OF THE BOSTON RED SOX



“  
I really love to walk around downtown Boston and it's amazing just to talk to people from Boston.

PATRICIA, BRAZIL



# Embassy Fort Lauderdale



Sunny Fort Lauderdale is an ideal place to experience American-style beach life, culture, and entertainment. Embassy Fort Lauderdale is a modern study centre located close to our residences, river-front cafés, boutiques, and exciting nightlife.

## Residential accommodation

- Minimum age 16
- Single/twin suites and studios with air conditioning, cable TV, laundry and a swimming pool
- En-suite
- Self-catering

## Homestay

- Available across the Fort Lauderdale area
- Single/twin rooms
- Half-board (14 meals per week)
- Bed and breakfast option

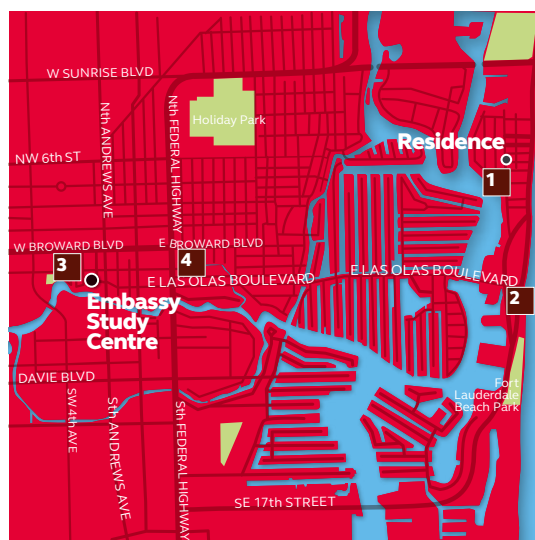
## Reasons to choose Embassy Fort Lauderdale

- Our modern centre is located by the Fort Lauderdale Riverwalk and a short walk from Las Olas trendy shopping area
- Our residence is only one block from the beach - with pool table, BBQ facilities and outdoor swimming pool it is very popular with students
- The Floridian climate makes for a relaxed and warm atmosphere which makes learning enjoyable and fun
- Our most cost-effective centre in the USA

## Courses

- Intensive Programme
- Standard Programme
- Standard Plus Programme
- Communication Skills (elective)
- Business English (elective)
- English in Action
- Exam Preparation: TOEFL (elective)
- Vacation and Travel English
- One-to-one lessons

## EMBASSY FORT LAUDERDALE FACILITIES AT A GLANCE:



- 1 FORT LAUDERDALE BEACH
- 2 LAS OLAS BEACH
- 3 HIMMARSHEE VILLAGE - THRIVING ENTERTAINMENT DISTRICT
- 4 LAS OLAS SHOPPING AND DINING DISTRICT



“

I started at level 1 and am already level 4 so am very proud of this!

GLADYS, FRANCE



# Embassy Long Beach



Embassy Long Beach is situated in a lively beach community, full of shopping, parks, and entertainment. Spend your California weekends in glamorous Hollywood, metropolitan LA, or exploring one of America's most beautiful coastlines.

## Residential accommodation

- Minimum age 18
- Only steps from the beach, every room features a balcony overlooking the pool and barbecue area or the marina
- Twin, self catering, en-suite rooms with a refrigerator and microwave in every room

## Homestay

- Available across the Los Angeles and Long Beach area
- Single/twin rooms
- Half-board (14 meals per week)
- Bed and breakfast option

## Reasons to choose Embassy Long Beach

- An escape from LA and its highways, Long Beach is a relaxed Californian alternative with beach culture to match
- Our modern centre with patios and outdoor courtyards makes learning and making friends an enjoyable experience
- Excellent for both long-term students who want to be a part of the beachside culture or for Vacation & Travel English students that wish to explore the great Californian outdoors

## Courses

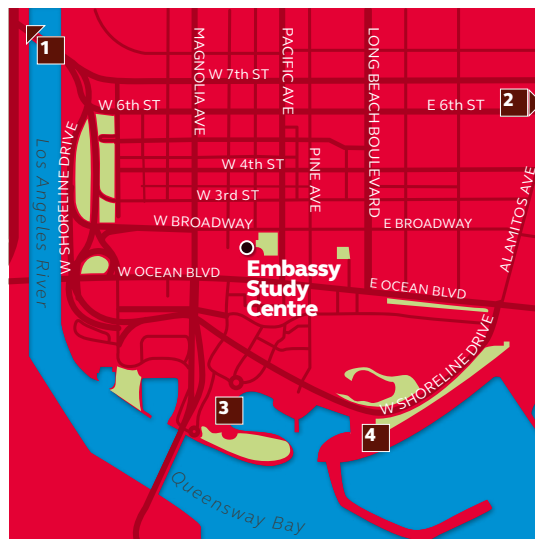
- Intensive Programme
- Standard Programme
- Standard Plus Programme
- Communication Skills (elective)
- Business English (elective)
- English in Action
- Exam Preparation: TOEFL (elective)
- Vacation and Travel English
- One-to-one lessons

## EMBASSY LONG BEACH FACILITIES AT A GLANCE:



“At Long Beach we often come together in the centre as a family but also get to go to amazing places like Hollywood, the Southern California beaches and Disney.

MARK CANETT,  
ACADEMIC MANAGER,  
LONG BEACH



- 1 HOLLYWOOD AND DOWNTOWN LA – LESS THAN AN HOUR AWAY
- 2 DISNEYLAND – 40-MINUTES FROM THE STUDY CENTRE
- 3 LONG BEACH AQUARIUM
- 4 SHORELINE VILLAGE – RESTAURANTS, SHOPPING AND ENTERTAINMENT



“

I love my school,  
when it is someone's  
birthday we all celebrate  
and go to the beach.

KUHEI, JAPAN

# Embassy New York



Experience life in one of the greatest cities in the world at our legendary Embassy New York location. Our centre is a few blocks away from the Empire State Building and Madison Square Garden, and two stops away from Times Square, so you'll truly be in the heart of NYC when you study with us!

## Residential accommodation

- Minimum age 18
- Single and shared self catering, en-suite rooms in the New Yorker residence within walking distance of school

## Homestay

- Available in Queens, Brooklyn, Long Island and New Jersey
- Single rooms
- Half-board (14 meals per week)
- Bed and breakfast option

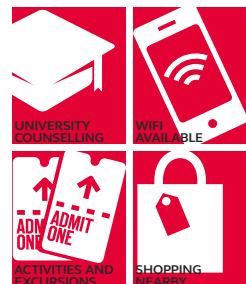
## Reasons to choose Embassy New York

- Our centre in the heart of Manhattan has been successfully teaching students English for over 30 years
- Our experienced teaching team make this the ideal location to study for and achieve higher TOEFL scores. You can even study the TOEFL on the Vacation and Travel programme
- Our residence is located in the bustling heart of New York City, across the street from Madison Square Garden and only a quick 10-minute walk to the centre
- With so much to do in Manhattan you will be spoilt for choice with our range of activities to ensure you make new friends and get to know the city

## Courses

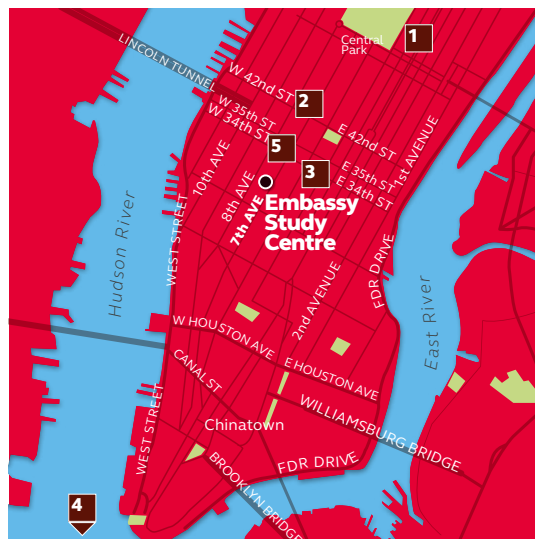
- Intensive Programme
- Standard Programme
- Standard Plus Programme
- Beginner English
- Communication Skills (elective)
- Business English (elective)
- English in Action
- Exam Preparation: TOEFL (core)
- Vacation and Travel English
- One-to-one lessons

## EMBASSY NEW YORK FACILITIES AT A GLANCE:



“New York is a big busy city but when they're at Embassy New York students feel like they are part of a family - it's a home base in the middle of this major metropolitan area.”

ZACHARY PIPER,  
CENTRE DIRECTOR,  
NEW YORK



- 1 MUSEUM MILE - HOME OF THE MET, GUGGENHEIM AND MANY MORE
- 2 TIMES SQUARE
- 3 EMPIRE STATE BUILDING
- 4 STATUE OF LIBERTY
- 5 NEW YORKER RESIDENCE





“ My teacher told me some great restaurants to visit in Brooklyn. It’s very cool here and I love it!

GIULIA, ITALY



# Embassy San Diego



Surf's Up at Embassy San Diego! Experience the great weather and laid back attitude of California when you study at our bright downtown campus. You will live close to incredible beaches, exciting neighbourhoods and of course the great Californian outdoors!

## Residential accommodation

- Minimum age 18
- Single/twin rooms
- Private and shared bathrooms
- Self-catering

## Homestay

- Available across the San Diego area
- Single/twin rooms
- Half-board (14 meals per week)
- Bed and breakfast option

## Reasons to choose Embassy San Diego

- One of our most popular centres in the USA there will be plenty of opportunities to make new friends from all over the world
- Amazing views of the ocean and San Diego skyline from our 22nd floor location
- If you wish to study for the Cambridge English or TOEFL exams our teaching staff have the experience to set you up for success

## Courses

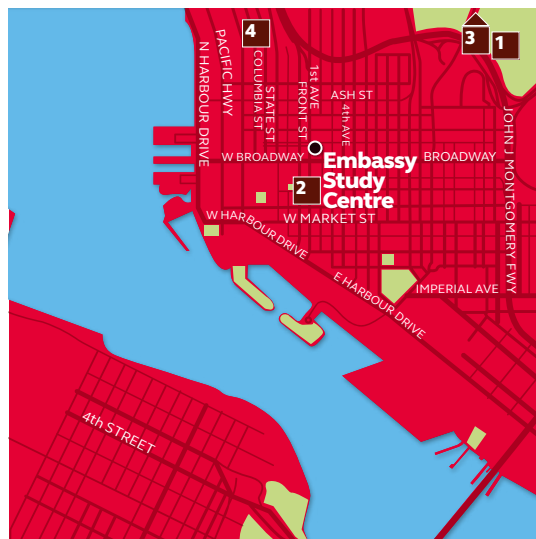
- Intensive Programme
- Standard Programme
- Standard Plus Programme
- Beginner English
- Communication Skills (elective)
- Business English (elective)
- English in Action
- Exam Preparation: FCE and CAE; TOEFL (core)
- Vacation and Travel English
- One-to-one lessons

## EMBASSY SAN DIEGO FACILITIES AT A GLANCE:



“We work hard to make sure students reach their goals but also get out of class in time for fun in the sun at some of the most beautiful beaches in the country.”

DANIEL NOWATNICK,  
CENTRE DIRECTOR,  
SAN DIEGO



- 1 BALBOA PARK
- 2 GASLAMP DISTRICT (LIVE MUSIC, CAFÉS, THEATRE, BARS, SHOPPING...)
- 3 SAN DIEGO ZOO
- 4 LITTLE ITALY MERCATO FARMERS' MARKET





When I saw you could learn English and go to the beach it was an easy decision and it has been an unbelievable experience.

ANDRES, COLOMBIA



# Embassy San Francisco



San Francisco is a vibrant and culturally rich American city, famous for music, art, and iconic sites such as the Golden Gate Bridge and Fisherman's Wharf. Embassy San Francisco is centrally located close to Union Square, making it a great hub for exploring the city.

## Residential accommodation

- Single/twin rooms
- Private and shared bathrooms
- Self-catering
- Monroe Residence available for students aged 16+ in the summer with half-board meal plan and year-round for students aged 18+

## Homestay

- Available across the San Francisco area
- Single/twin rooms
- Half-board (14 meals per week)
- Bed and breakfast option

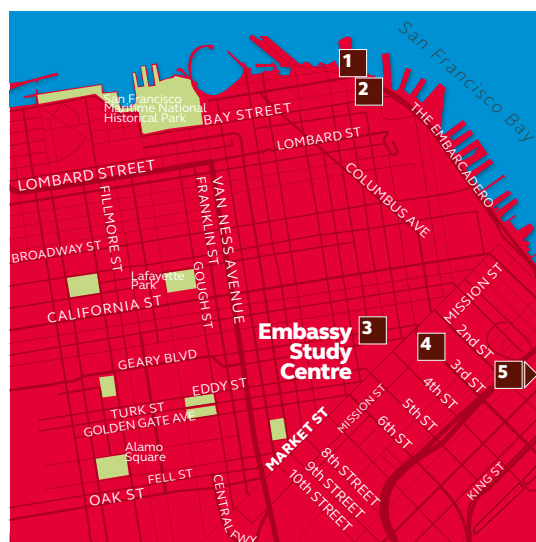
## Reasons to choose Embassy San Francisco

- The family community you will join here offers a home-from-home welcome that makes it hard to leave – thanks to the experience and generosity of the team at this centre
- Our English in Action placements are incredibly popular due to the success of our partnerships with some local companies
- Our half-board residence option makes this an affordable destination

## Courses

- Intensive Programme
- Standard Programme
- Standard Plus Programme
- Communication Skills (elective)
- Business English (elective)
- English in Action
- Exam Preparation: TOEFL (core)
- Vacation and Travel English
- One-to-one lessons

## EMBASSY SAN FRANCISCO FACILITIES AT A GLANCE:



- 1 FISHERMAN'S WHARF
- 2 NORTH BEACH – GREAT ITALIAN DINING
- 3 UNION SQUARE – SHOPPING DISTRICT
- 4 THE SAN FRANCISCO MUSEUM OF MODERN ART
- 5 AT&T PARK – HOME OF THE GIANTS BASEBALL TEAM



“

I really like San Francisco –  
it's really all about the  
people and cultures here.

KIRAL, TURKEY



# Embassy Toronto



Friendly and cosmopolitan are two words that describe the amazing city of Toronto. When you study at Embassy Toronto, you will experience one of the world's "most liveable cities," with hundreds of parks, the CN Tower and Lake Ontario within easy reach and with many cultural activities to enjoy.

## Residential accommodation

- Single, self-catering, shared bathroom rooms available at the Canadian College of Naturopath Medicine

## Homestay

- Available across the greater Toronto area
- Single rooms
- Half-board (14 meals per week)
- Full-board (packed lunch available)
- Bed and breakfast option available on request

## Reasons to choose Embassy Toronto

- Canadians are renowned for their friendliness and our experienced team in Toronto will make sure you feel welcome at our downtown location
- Large bright classrooms with great views of the Toronto skyline make it a comfortable place to study

## Courses

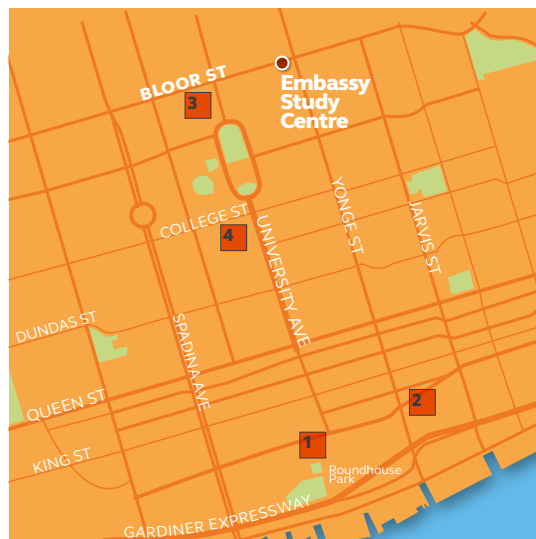
- Intensive Programme
- Standard Programme
- Beginner Programme
- Communications Skills (elective)
- Business English (elective)
- Power Speaking Programme
- Exam Preparation: IELTS (elective)

## EMBASSY TORONTO FACILITIES AT A GLANCE:



“From the first day to after our students have graduated, we are focused on the outcomes and the goals of each individual.”

DEREK SEXTON,  
CENTRE DIRECTOR,  
TORONTO



- 1 CN TOWER
- 2 ST. LAWRENCE MARKET
- 3 ROYAL ONTARIO MUSEUM
- 4 KENSINGTON MARKET



“

We have a lot of fun here,  
we learn but I am laughing  
every day.

NICO, GERMANY



# Embassy Auckland



Auckland is famous for culture, nightlife, and adventure. At Embassy Auckland, you will be poised to explore the world-renowned natural wonders of New Zealand, including stunning beaches, rugged mountains, and diverse island landscapes.

## Residential accommodation

- A variety of accommodation is available at lodges
- Single and shared rooms
- Self-catering

## Homestay

- Available across the Auckland area
- Single rooms
- Half-board (16 meals per week)

## Reasons to choose Embassy Auckland

- Mingle with college students who share our campus
- Our K'Road location is a vibrant area with vintage shops, contemporary art and live music
- We have an experienced team here to make sure you make the most of your studies and your free time

## Courses

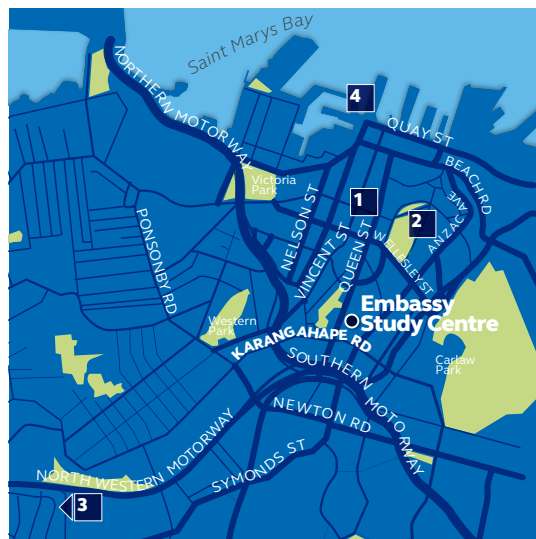
- Intensive Programme
- Semi-intensive Programme
- Standard Programme
- Communication Skills (elective)
- Exam Preparation: IELTS (core and elective)
- One-to-one lessons

## EMBASSY AUCKLAND FACILITIES AT A GLANCE:

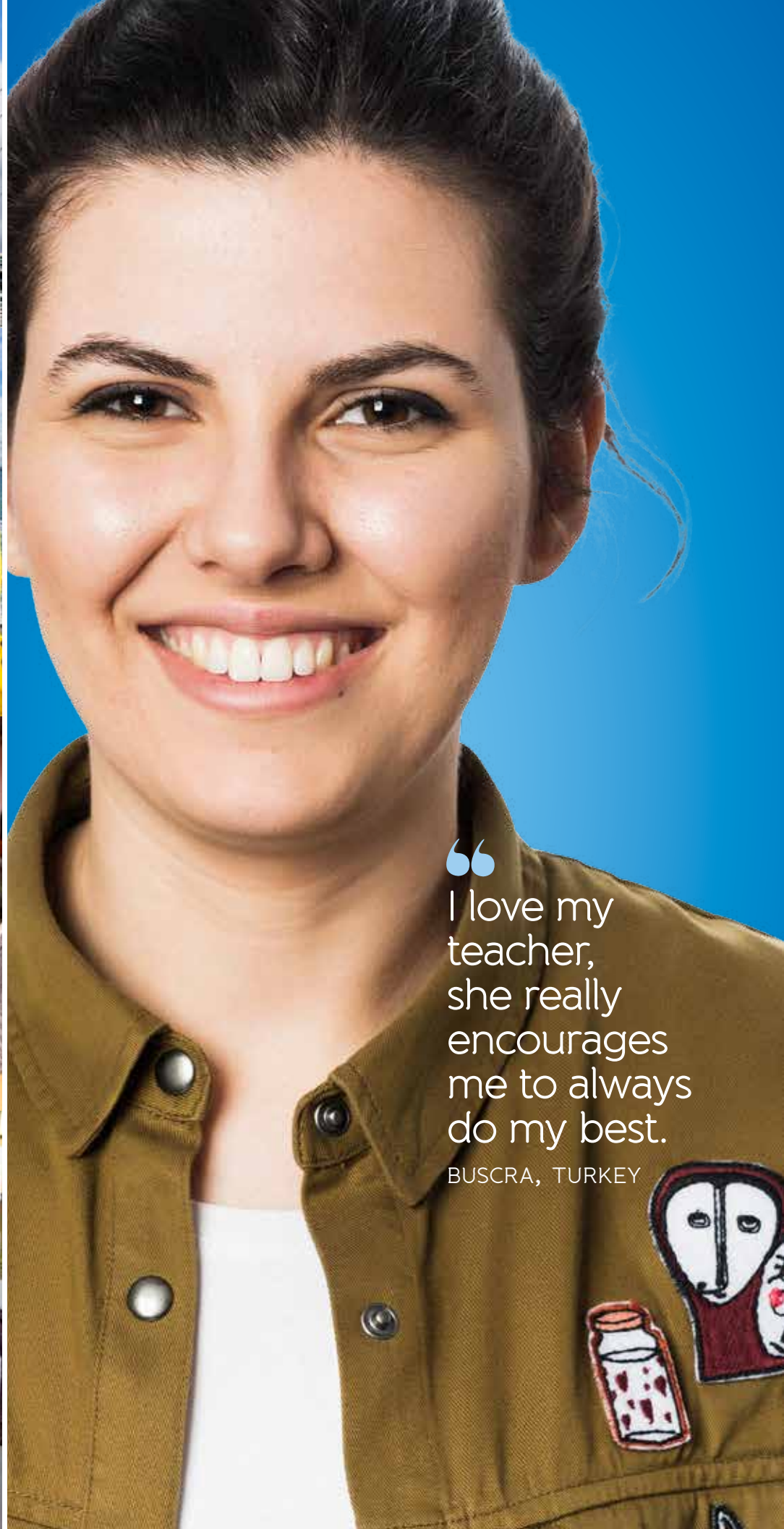


“Auckland is a vibrant, multicultural city and the gateway to a country of outstanding physical beauty. Our friendly and committed staff look forward to giving you the best possible learning experience.”

LINDSAY SPEDDING,  
CENTRE DIRECTOR,  
AUCKLAND



- 1 SKY TOWER
- 2 THE UNIVERSITY OF AUCKLAND
- 3 PIHA BEACH
- 4 VOYAGER NEW ZEALAND MARITIME MUSEUM



“  
I love my  
teacher,  
she really  
encourages  
me to always  
do my best.  
BUSCRA, TURKEY



# Embassy Brisbane



A city surrounded by water, Brisbane offers the best of city life with the adventure of the outdoors. Our campus is located in the centre of Brisbane, making it easy to explore all of the local attractions and natural wonders of Australia.

## Residential accommodation

- Adalong Guest House is a short walk from the study centre, close to South Bank Parklands, public transport, cafés, museums and galleries
- Single/twin rooms
- Shared bathrooms
- Half-board (breakfast and dinner Monday through Friday)
- Dining room, lounge and courtyard
- Laundry room

## Homestay

- Available across the Brisbane area
- Single rooms
- Half-board (16 meals per week)

## Reasons to choose Embassy Brisbane

- A capital city with a relaxed Aussie lifestyle, our friendly staff will make you feel at home
- Meet other college students who share our campus
- We have a great selection of host families who will make this a home away from home
- Ideal for students wishing to go on to one of our Queensland university partners - choose our English for Academic Purposes course

## Courses

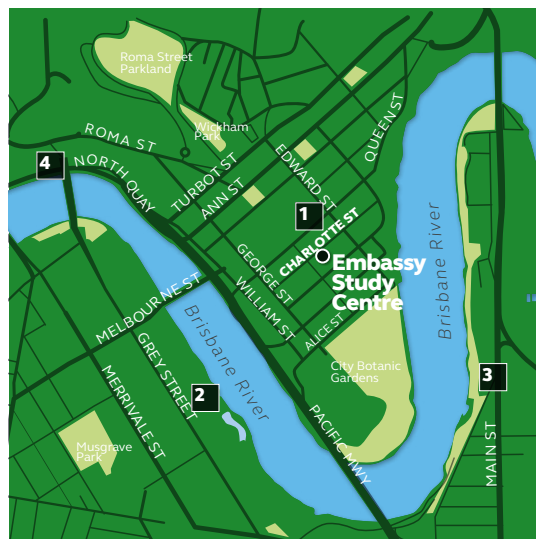
- Intensive Programme
- Semi-intensive Programme
- Standard Programme
- Communication Skills (elective)
- Business English (elective)
- English for Academic Purposes
- Exam Preparation: IELTS (core and elective)
- One-to-one lessons

## EMBASSY BRISBANE FACILITIES AT A GLANCE:



“Our goal is to ensure our students are involved in their language learning and that they can work towards achieving their dream of speaking English like a native speaker.”

BRADLEY MULLER,  
CENTRE DIRECTOR,  
BRISBANE



- 1 QUEEN STREET MALL
- 2 THE WHEEL OF BRISBANE
- 3 KANGAROO POINT CLIFFS
- 4 CITYCAT RIVER TRIP





“

In Embassy I found qualified teachers and had a good opportunity to increase my English.

MARISTELA, BRAZIL



# Embassy Melbourne



Embassy Melbourne is our most modern facility, located in Australia's stylish and cosmopolitan city. Located in the heart of the Central Business District and sharing a campus with other college and university students you are close to the fashionable shops, trendy cafés, and diverse cuisine that this cool city has to offer.

## Residential accommodation

- Urban Central: Dorm, single, double, twin share and family rooms. Within 15 minutes walking distance of Embassy

## Homestay

- Available across the Melbourne area
- Single rooms
- Half-board (16 meals per week)

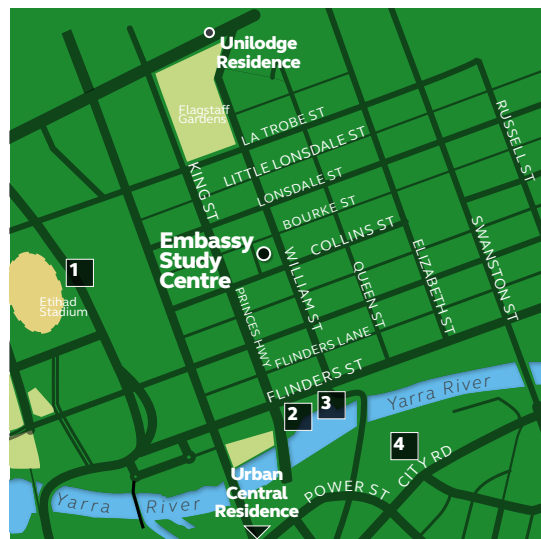
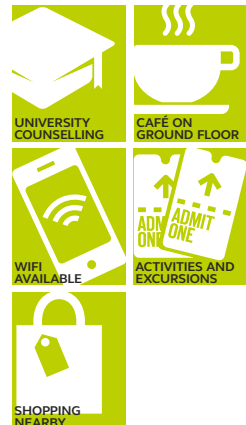
## Reasons to choose Embassy Melbourne

- The most talked about English school in Melbourne with state-of-the-art facilities in a fantastic modern building
- Meet college and university students who share our campus - many of which are from Australia
- Choose our centre for success in Cambridge and IELTS exams
- Sit your FCE or CAE exam on campus. We are a Cambridge exam centre

## Courses

- Intensive programme
- Semi-intensive programme
- Standard programme
- Beginner English
- Communications Skills (elective)
- Business English (elective)
- English for Academic Purposes
- Exam Preparation: FCE, CAE, IELTS (core and elective)
- One-to-one lessons

## EMBASSY MELBOURNE FACILITIES AT A GLANCE:



- 1 SPENCER OUTLET SHOPPING CENTRE
- 2 STATE LIBRARY
- 3 MELBOURNE AQUARIUM
- 4 EUREKA TOWER





“

I get many opportunities  
to express myself.

MASAHIRO, JAPAN



# Embassy Surfers Paradise



The name says it all! Embassy Surfers Paradise is ideal for students who want to experience living on the legendary Gold Coast. You will improve your English while learning to surf some of Australia's most famous beaches.

## Residential accommodation

- A variety of accommodation is available in lodges with swimming pools, BBQ areas and recreational facilities
- Dorm, single, twin share and double rooms available
- Self-catering

## Homestay

- Available across the Gold Coast area
- Single rooms
- Half-board (16 meals per week)

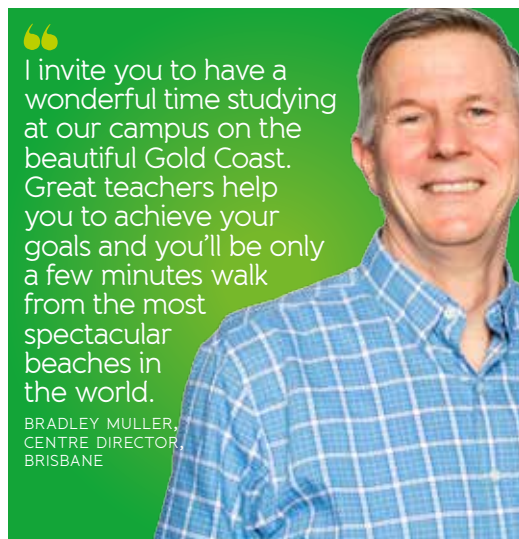
## Reasons to choose Embassy Surfers Paradise

- We are only a block away from the main attraction - Surfers Paradise beach
- All the fun and excitement of a tourist town but a dedicated and experienced team in the centre to keep you onTrack!
- Margaret, our student services manager, will make sure you are well looked after

## Courses

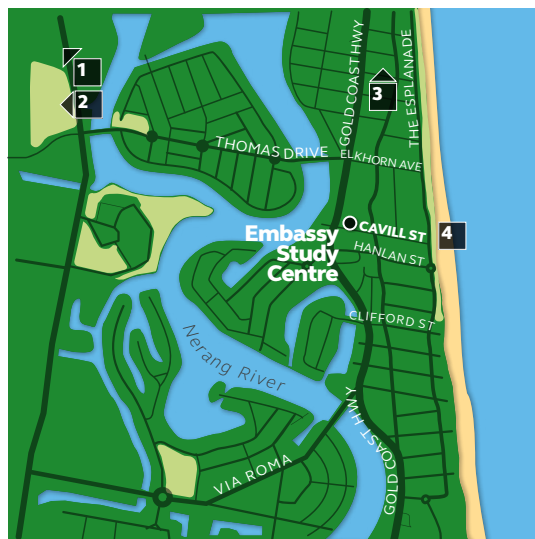
- Intensive Programme
- Semi-intensive Programme
- Standard Programme
- Business English (elective)
- Communication Skills (elective)
- Exam Preparation: IELTS (core and elective)
- One-to-one lessons

## EMBASSY SURFERS PARADISE FACILITIES AT A GLANCE:



“ I invite you to have a wonderful time studying at our campus on the beautiful Gold Coast. Great teachers help you to achieve your goals and you'll be only a few minutes walk from the most spectacular beaches in the world.

BRADLEY MULLER,  
CENTRE DIRECTOR,  
BRISBANE



- 1 DREAMWORLD THEME PARK
- 2 MOVIE WORLD
- 3 SEA WORLD
- 4 SURFERS PARADISE

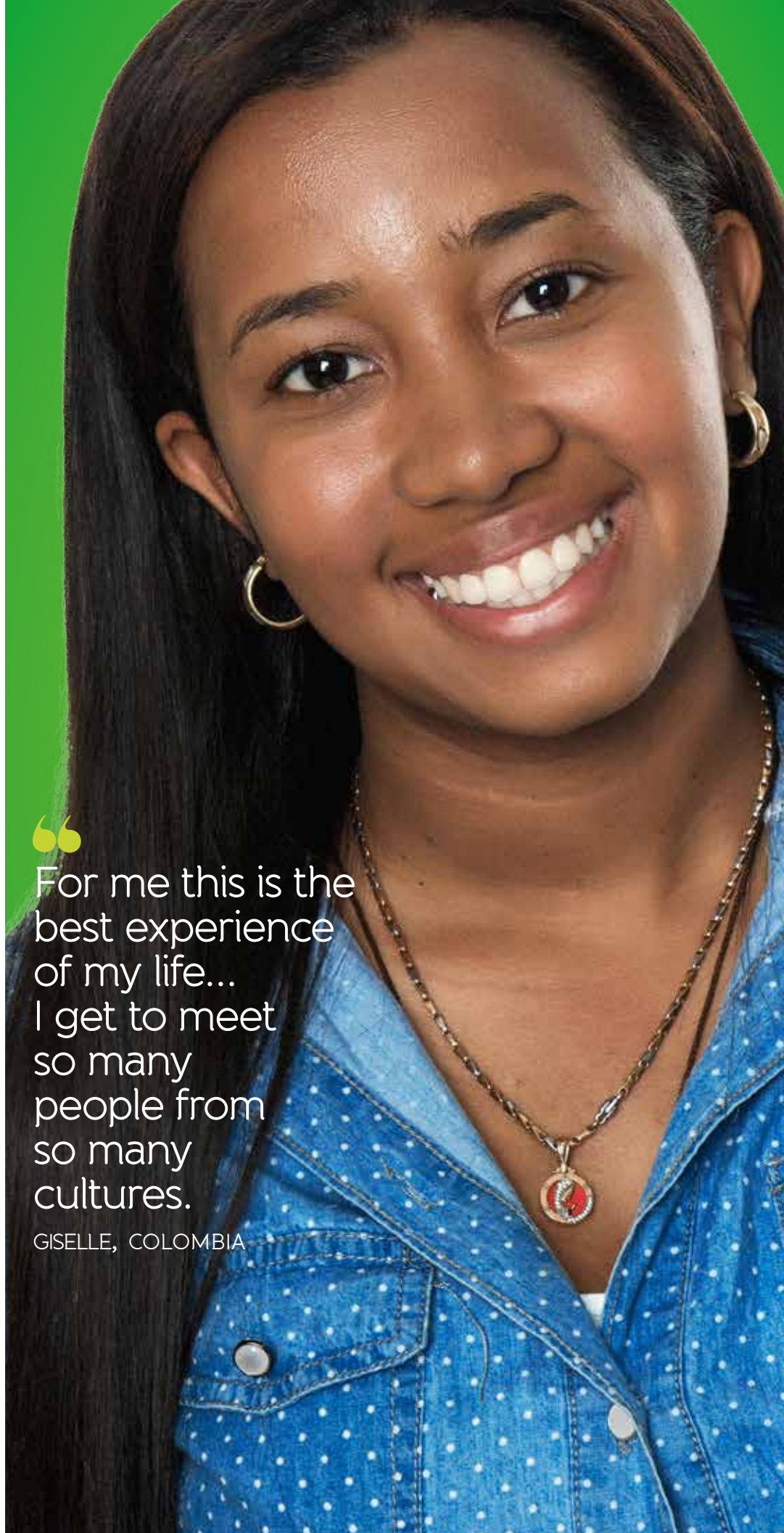




“

For me this is the best experience of my life... I get to meet so many people from so many cultures.

GISELLE, COLOMBIA





# Embassy Sydney



Embassy Sydney's university-style campus is ideally situated near restaurants, bars, and attractions. You are only walking distance from the iconic Sydney Opera House and Harbour Bridge, and can easily get a bus or a ferry to one of Sydney's famous beaches.

## Residential accommodation

- A variety of well-located residences offer a range of features to meet every need
- Jack's Place and Yurong House is within walking distance of Embassy
- Sinclair's Bondi is minutes from the beach
- Single, twin and double rooms
- Shared or en-suite bathrooms
- Self-catering

## Homestay

- Available across the greater Sydney area
- Single rooms
- Half-board (16 meals per week)

## Reasons to choose Embassy Sydney

- Meet other college and university students who study on the same campus
- Ideal choice for students wanting success in their Cambridge exams with an experienced teaching team
- Sit your FCE or CAE exam on campus. We are a Cambridge exam centre
- Study our English for Academic Purposes course and gain access to a wide choice of University partners in New South Wales
- You will be spoiled for choices for lunch, snacks or just coffee right on our doorstep

## Courses

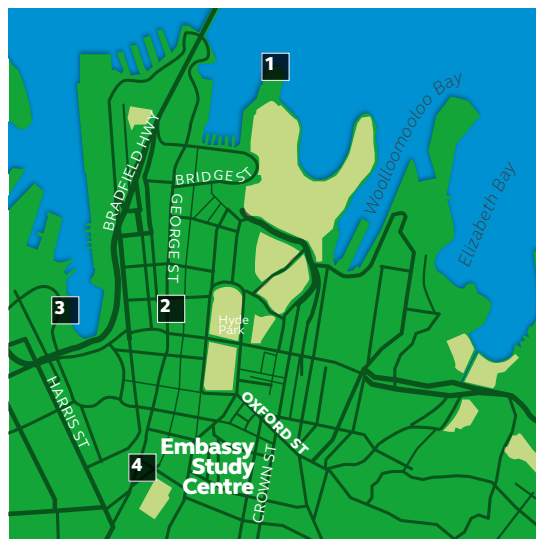
- Intensive Programme
- Semi-intensive Programme
- Standard Programme
- English for Academic Purposes
- Communications Skills (elective)
- Business English (elective)
- Exam Preparation FCE, CAE, IELTS (core and elective)
- One-to-one lessons

## EMBASSY SYDNEY FACILITIES AT A GLANCE:



“Sydney is famous for its beautiful beaches, The Opera House and Harbour Bridge. Our goal is to deliver excellent and friendly teaching.”

RICHARD PINCUS,  
CENTRE DIRECTOR,  
SYDNEY



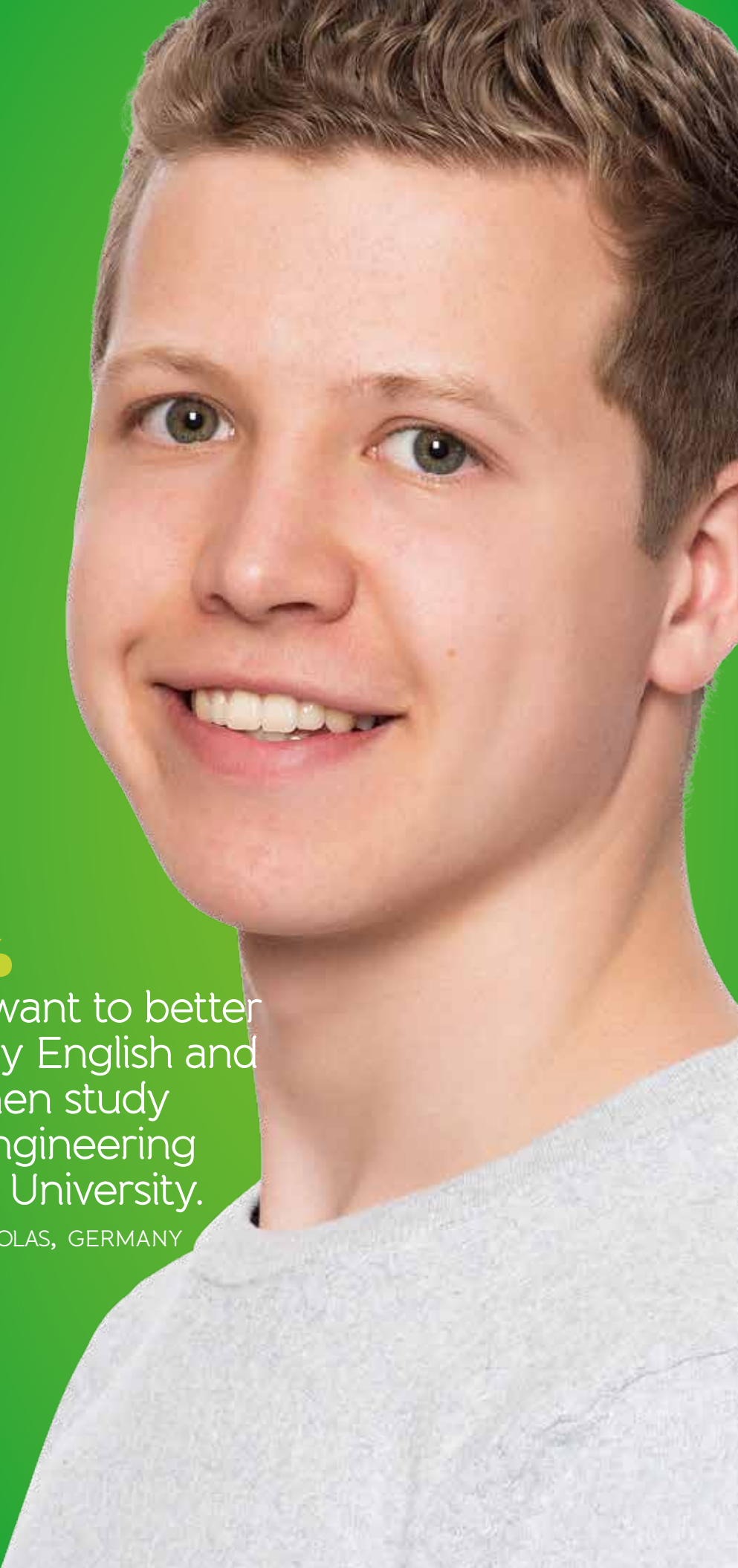
- 1 SYDNEY OPERA HOUSE
- 2 SYDNEY TOWER
- 3 DARLING HARBOUR - BARS AND RESTAURANTS
- 4 CHINATOWN



“

I want to better my English and then study engineering in University.

NICOLAS, GERMANY





# Accommodation





Whether you choose to live in a residence or a homestay, your Embassy English accommodation will ensure your stay with us is comfortable and fun.

#### **Residence - live with other students**

Live independently and share experiences with other students from around the world. Our residences are carefully chosen for their comfort, location, facilities and staff.

- Easy travel to and from the study centre
- Shared and single rooms
- En-suite or budget shared facilities
- Self-catering facilities, cafeteria and meal plan options
- Lodges and backpacker options

#### **Homestay - experience life with a local host**

Homestay offers you the opportunity to live with friendly and welcoming hosts in their home. You'll be immersed in the English language, meet local people and learn about their culture.

#### **Minimum ages**

The minimum age to study in an Embassy school is 16, except in Central London where the minimum age is 18. We have special provisions for students who are 16 and 17.

#### **Accommodation for 16 and 17 year olds**

Embassy English provides accommodation that is both safe and suitable for students under the age of 18. Minors are able to live in homestays or in selected Embassy approved residences, with the option of full-board meal plans in many centres. Curfews are established for homestays and residences.





# Terms and Conditions

The contractual entity that will be providing the services to you and that you agree these terms and conditions with is determined by the country in which you will be studying.

In the **UK** this is Embassy Educational Services (UK) Limited (Company Registration Number 1599830, whose registered address is 1 Billinton Way, Brighton, BN1 4LF.

In the **US** this is Center for English Studies, LLC, whose registered address is 330 7th Avenue 2nd Floor New York NY 10001.

In **Canada** this is Study Group Canada, Limited. Co no. 3229099, whose registered address is 2900, 10180-101 Street, Edmonton, Alberta T5J 3V5 Canada.

In **Australia** this is Study Group Australia Pty Limited. ACN 070 919 327 of Level 24, 201 Elizabeth Street, Sydney NSW 2000, Australia. In **New Zealand** this is Study Group NZ Ltd. Co no. 1012808 whose office is at 75 Karangahape Road, Newton, Auckland, New Zealand.

## 1. Payment of Fees

Visa documents are issued when appropriate payment has been received. Transfer and accommodation documents are released 14 days prior to course start date provided appropriate payment and travel details have been received and enrolment processed more than four weeks in advance of course start date. In **Australia**, students with multiple study periods must pay the total due on enrolment before visa documents are issued and no later than 14 days before arrival. Subsequent instalment payments must be received in accordance with the due dates stated on the invoice. In **California**, students with programmes more than 16 weeks in duration may elect to pay in full or to pay tuition in instalments. Students choosing to pay in instalments must pay the total due on enrolment before visa documents are issued and no later than 14 days before arrival. Subsequent instalment payments may be received in accordance with the due dates stated on the invoice. Instalment due dates for each course are determined according to the length of the programme. Instalments will be no more than the equivalent of 16 weeks' worth of the programme tuition until the programme duration midpoint, when any outstanding balance must be received in full.

Payments made using a credit card may be subject to a 2.5% credit card processing fee. Payment can be made to Embassy English for some locations using a number of payment options via the PayOnline platform. Access to this platform can be found at [pay.embassyenglish.com](http://pay.embassyenglish.com) using the unique student access code. Certain payment options will carry a processing fee of 2.5%. Embassy English reserves the right to alter this charge from time to time. If the student chooses to pay in their local currency, a foreign exchange rate will apply. The applicable exchange rate can be viewed online as at the time and date of the payment.

Bank charges and commission for both the sending and receiving banks should be paid by the sender of funds or they will be applied to the account of the Embassy English Representative or if no representative, then to the account of the individual from whom Embassy English has received the original direct payment.

## 2. Services

Embassy English reserves the right to change details of its services, including courses, facilities, schools, accommodation, and course dates, where circumstances beyond Embassy English's control necessitate such changes or where the number of enrolments is not enough to operate a course viably.

## 3. Course Entry Levels

Most courses require minimum levels of English for entry. If after the placement test, a student is found to be below the minimum level required to start the course, Embassy English reserves the right to place the student in a class appropriate to the student's language level and/or a different curriculum. Where this results in extending the duration of a student's course, Embassy English may need to issue a new Certificate of Enrolment. Students may be transferred to the nearest Embassy English Centre running a lower level course.

## 4. Changes to Enrolments

Embassy English reserves the right to charge an Administration Fee (GBP50; CAD80; AUD120; NZD90) each time course or accommodation details are changed or cancelled after a place has been confirmed. Additionally, when a change request for a previously confirmed accommodation is received less than 7 days in advance of the scheduled arrival date, an equivalent week's accommodation penalty fee will be charged. These fees will not apply to upgraded or extended courses.

## 5. Changes to Airport Transfers

Notification of change to airport transfers must be sent to our International Admissions Centre at least 2 full working days prior to the designated arrival time. If notice is not received Embassy English cannot be held liable for operational errors, and an additional Transfer and/or Administration Fee may be applied.

## 6. Accommodation and Travel details

Accommodation and transfer confirmations\* will be provided 14 days prior to course start date for all enrolments received more than 4 weeks in advance of course start date. Accommodation and transfer confirmations\* will be provided no less than 4 days prior to course start date for all enrolments received less than 4 weeks in advance of course start date. If travel information is received less than 2 working days prior to the scheduled arrival date then Embassy English may not be in a position to provide the transfer or accommodation service for the weekend of arrival. \*Provided travel details and payment in accordance with your payment arrangement has been received.

## 7. Accident and Medical Insurance

It is necessary that all students have appropriate accident and medical insurance. Students must provide proof of adequate cover at enrolment. Embassy English also offers insurance coverage called StudyCare. Cover under the StudyCare insurance policy does not commence until the insurance fees, which are non-refundable, have been paid in full. StudyCare is not available to students within Australia. In the **UK**, students not wishing to take StudyCare must present an equivalent insurance certificate or European Health Insurance card on arrival. In the **USA** and **Canada**, students not wishing to take StudyCare must present an equivalent insurance certificate on arrival. In **New Zealand** students who are covered by an alternative insurance policy must have a level of cover at least equivalent to that offered by StudyCare. Students without insurance must take StudyCare. In the **USA**, StudyCare is mandatory for students taking English in Action. In **Canada**, StudyCare is mandatory for students taking the International Internship Programme and the Work Placement programme. In **New Zealand**, having appropriate and current medical and travel insurance is compulsory for all international students. This is a requirement of the New Zealand Ministry of Education under the Code of Practice for the Pastoral Care of International Students, found on their website at [www.minedu.govt.nz/goto/international](http://www.minedu.govt.nz/goto/international). Most international students are not entitled to publicly funded health services while in New Zealand. If a student receives medical treatment during a visit, they will be liable for the full costs of that treatment. Full details on entitlements to publicly funded health services are available through the Ministry of Health, and can be viewed on their website at [www.moh.govt.nz](http://www.moh.govt.nz). In **Australia**, it is compulsory for those on Student Visas to take Overseas Student Health Cover (OSHC) for the duration of the time they are in Australia. Students need to buy OSHC before coming to Australia, to cover them from when they arrive. This ensures they have adequate health care arrangements while studying in Australia. If the student chooses for Embassy English to arrange OSHC for the first course/year only of their programme, it is their responsibility to either extend or take out OSHC for the rest of their time in Australia. They must provide evidence of cover for the entire study period before a Confirmation of Enrolment will be issued. There will be no refund of OSHC Insurance post-arrival.

## 8. General Refund Policy

Embassy English defines a full course of study as the initial enrolment period. Extensions are considered new enrolment periods. All refunds will be sent to the account of the Embassy English representative/agent from whom the fees were originally paid or, if there is no representative/Agent on the account, to the individual from whom Embassy English has received the original direct payment. In **UK, ANZ, and Canada**, if a student's visa application is rejected after payment has been received, all fees, excluding any cancellation fees detailed in the Cancellation Policy below, will be refunded within 28 days, provided a visa refusal letter is received by our International Admissions Centre at least 2 working days before the course is due to start and the student has fulfilled all requirements for a visa application. In the **USA** students in San Diego, Los Angeles and San Francisco must sign a California State Enrolment & Refund Agreement form. Refunds will be processed according to these terms and conditions. In **New Zealand** the refund will be paid directly to the student. In **Australia** this agreement, and the availability of complaints and appeals processes, does not remove the right of the student to take action under Australia's consumer protection laws. Refunds will be provided to students within 28 days if the student defaults based on a visa denial provided the International Admissions Centre receives the visa denial letter. However, a refund will not be provided in any circumstances where the student has supplied fraudulent, forged or deliberately misleading documentation. If Embassy English defaults, the student is eligible to receive a refund of the unexpended pre-paid tuition fees which the student has paid to Embassy English. The refund amount will be based on the portion of tuition for which the student has paid but for which tuition has not yet been received. In the unlikely event that Embassy English is unable to deliver a course in full, the student will be offered the refund amount in accordance with the above paragraph. The refund will be paid within 14 days of the day on which the course ceased being provided. Alternatively, the student may be offered enrolment in a suitable alternative course by Embassy English at no extra cost. The student has the right to choose whether they would prefer a full refund of course fees, or to accept a place on another course. If they choose placement on another course, Embassy English will ask them to sign a document to indicate acceptance of the placement. If Embassy English is unable to provide a refund or to place the student on an alternative course, the Australian government's Tuition Protection Scheme's (TPS) director will provide access to a suitable alternative course.

## 9. Cancellation Policy

Embassy English defines "cancellation" as a change occurring before the start date of the first course. All cancellations must be made in writing to our International Admissions Centre and the following refund policies apply: Enrolment Fee, Courier Fee, Accommodation Placement Fee, or Administration Fee are non-refundable (In the **USA**, maximum of \$500). In **Australia**, Embassy English further reserves the right to withdraw or cancel an offer at any time in circumstances where evidence of non-genuine temporary entrant status is identified. In such instances, the following refund policies apply: 100% tuition Fee, Enrolment Fee, Courier Fee, Accommodation Placement Fee, or Administration Fee. However, a refund will not be provided in any circumstances where the student has supplied fraudulent, forged or deliberately misleading documentation.

## 10. Tuition Refunds before Arrival

In the **UK** and **Canada**, where cancellations are received in writing more than 14 days before the first course start date 100% of tuition fees will be refunded, but any courier fee, enrolment fee, UK Visa application fee (CAS) and added administration fees are non-refundable (In the **USA**, not to exceed \$500.). Where cancellations are received in writing 14 days or less prior to the first course start date students will be charged GBP250 (UK) or CAD350 (Canada), in addition to the fees listed in this paragraph. In the **USA**, students will be refunded tuition fees in full, less fees not exceeding \$500.

In **Australia**, for pre-arrival Student visa refusal, the following applies: Embassy English agrees to refund within 28 days, tuition and non-tuition fees paid where the student produces acceptable certified evidence that the application made for a student visa was rejected by a visa-issuing authority. The amount of the refund is the fees paid by or on behalf of the student, minus the lesser of the following amounts that will be retained:

- 1) 5% of the amount of fees received (pre-paid tuition fees, non-tuition fees)
- 2) \$500. For non-student visa refusal and general cancellation, including student visa applicant, the following applies: Students will be charged the enrolment fee plus 30% of total tuition fees, as well as all other sundry fees if cancelling prior to the start of their course.

In **New Zealand**, students will be refunded tuition fees in full, less the Enrolment Fee.

## Accommodation Refunds before Arrival

- a) Students cancelling their accommodation less than 14 days before arrival will be charged an amount equal to 1 week of accommodation (except in USA).
- b) For cancellations less than 48 hours before arrival, an amount equivalent to 4 weeks of accommodation will be charged, or the full accommodation fee if the booking is less than 4 weeks in duration (except in USA).

In the **USA**, student will be refunded accommodation costs in full, less the Accommodation Placement Fee.

## 11. Withdrawal Policy

Embassy English defines withdrawal as termination of a course after the first course has started. Any withdrawal must be made in writing to the Centre Director of the Embassy English school where the student is studying. Enrolment Fee, Courier Fee, Accommodation Placement Fee, and StudyCare or OSHC premium will not be refunded for any student terminating their course after arrival.

## Tuition Refunds after Arrival

Written notification of withdrawal must be provided as a condition for making refunds. If a student breaches the visa conditions, no refund of the tuition fees will be made. In the **USA** refunds are calculated from the Friday of the last week of attendance.

- a) If a student has completed less than 60 percent of the initial enrolment period or any subsequent enrolment period, i.e. extension, Embassy English will retain a pro-rated amount of tuition at the non-discounted (General English) rate.
- b) If a student has completed more than 60 percent of the total enrolment period, Embassy will not refund any unused tuition.
- c) No Shows: Full tuition fees will be refunded.

When determining the number of weeks completed by the student, Embassy will consider a partial week the same as if a whole week were completed. All refunds due will be made 45 days following the date of cancellation and paid to the account from which original payment was made. In the **UK, Canada, and Australia** no tuition fees will be refunded to students who notify the Embassy English Centre of their withdrawal after the commencement of their first course. When a student has enrolled in multiple locations/courses, the course start date for the purpose of this clause is that of the initial Embassy English course.

## In New Zealand

- a) For courses of 1 to 34 days duration, if the student withdraws within the first 2 days of the course, they will receive 50% of the total fees paid. If they withdraw after the first 2 days, no refund is made.
- b) For courses of 35 days to 3 months duration, if the student withdraws within the first 5 days of the course, they will receive 75% of the total fees paid. If they withdraw after the first 5 days, no refund is made.
- c) For courses greater than 3 months, if written notice of termination is received by the end of the eighth day of the course, a termination fee of the lesser of NZD500 or 10% of tuition will apply. Students terminating after this period will not receive a refund.

### Accommodation Refunds after Arrival

Students leaving their accommodation must give at least 28 nights of notice in writing. After deducting the price of accommodation used, including the required notice period charged at the standard accommodation rate, accommodation fees in excess of the accommodation period will then be refunded, less the administration fee. Local policies may apply depending on provider and are available upon request.

### 12. Visas

Students should contact their local embassy, Consulate or High Commission to ensure they are allowed to enter and study in their chosen country. If a student does not possess or maintain a valid visa status in accordance with the visa conditions then their course will be terminated without refund.

In the USA Embassy English is authorised under Federal Law to enrol non-immigrant students. By law, to issue the I-20 form, with the Enrolment Form, we must receive:

- The student's home address
- Proof of sufficient funds to meet tuition and living expenses such as a current bank statement or a letter from their bank
- A letter or notarised affidavit guaranteeing support from their parent or employer or sponsor

No visa support documentation will be provided until all fees have been received.

### 13. Holidays

Embassy English schools will be closed on public holidays and no compensation is provided for missed days due to public holidays. All students in the USA and UK in Homestay accommodation over the Christmas and New Year period will be charged a seasonal supplement of GBP50 (UK) or USD100 (USA) per week. Language Semester Abroad Start Dates and Holiday policies: please refer to our 2017 brochure or website at [www.embassyenglish.com/global/holiday-dates](http://www.embassyenglish.com/global/holiday-dates) for complete listing.

In the USA and Canada: For every 6 consecutive weeks attended, the student will be eligible for 1 week of vacation. Accrued vacation time may not exceed 8 weeks. If a portion of accrued vacation time is taken, the remainder is not transferable to a later date.

In the UK: One holiday booking per LSA semester. Holidays may be booked before or after arrival in Centre.

In Australia: Up to 2 weeks holiday after every 12 weeks of study, to a maximum of 4 weeks in 1 year. Holidays must be booked pre-arrival.

In New Zealand: Holidays may be booked after arrival provided the holiday falls within the end date of the visa.

LSA Holiday Policy: Holidays are flexible and may be booked according to the regional Embassy English school policy and visa conditions.

### 14. Resolution of Disputes

In the event of a dispute between an individual student and Embassy English, procedures are in place to facilitate the resolution of the dispute. Any complaint should first be made to the student's Embassy English Centre Director. Each complaint will be fully investigated provided that it is received within a month of the course ending and all fees have been paid. If the matter is not resolved, the student should communicate in writing to the local Embassy English Head Office (see inside back cover).

In Australia, students may lodge an external appeal or complain about this decision through the Overseas Students Ombudsman. The Overseas Students Ombudsman offers a free and independent service for overseas students who have a complaint or want to lodge an external appeal about a decision made by their private education or training provider. See the Overseas Students Ombudsman website [www.oso.gov.au](http://www.oso.gov.au) or phone 1300 362 072 for more information.

In New Zealand students may lodge a complaint with the International External Appeals Authority (IEAA): Please visit [www.justice.govt.nz/tribunals/international-education-appeal-authority](http://www.justice.govt.nz/tribunals/international-education-appeal-authority)

### 15. Liability

Embassy English and its staff and representatives will not be liable for loss, damage or injury to persons or property howsoever caused, except where liability is expressly imposed by law. Embassy English will not be liable in the event that any service contracted to be supplied by Embassy English becomes impossible to supply for any reason or any cause outside the control of Embassy English.

### 16. Valid prices

Prices are valid from 1 January 2017. Prices are subject to change without notice and will only be confirmed upon invoicing. For current prices please refer to [embassyenglish.com](http://embassyenglish.com). Agents should refer to the Partners website: [embassyenglish.com/partners](http://embassyenglish.com/partners)

### 17. Expulsion

Embassy English reserves the right to expel or evict from accommodations and courses arranged by Embassy English any student whose conduct is unsatisfactory at the discretion of the Centre Director. Unsatisfactory conduct includes but is not limited to: threatening behaviour, bullying, illegal activities, drug use, inappropriate alcohol use or repeated non-attendance of class.

In Australia, New York, and California centres, a student has the right to appeal against such a decision and details of that process are available from Embassy English. Students and their parents or guardians, where applicable, agree to pay the tuition fees and other charges applicable for the course on the due dates. It is understood and agreed that failure to do this may result in suspension from the programme and cancellation of the enrolment.

### 18. Promotional Activity

The student (and, where applicable, his or her parent or guardian):

- Agrees that the student's photographs, videos, artwork or other works, as well as recorded or written testimonials and details of the student's achievements (hereto referred to as "Student Images and Testimonials") may be used by Embassy English and its parent company Study Group, or by a third party agent of Study Group, worldwide for promotional purposes including in its printed and online marketing materials and on any social media network without further consent or notification; and
- Gives consent to Embassy English and to its parent company Study Group storing, or transferring across international borders, copies of the Student Images and Testimonials for such purposes.

### 19. Student Promise – Progress Guarantee

For the purposes of this clause the following terms have the following meanings:

"Entry Level" Means the level of English you start your course with, as agreed with you on or around the first day of your course and recorded as your entry level on My Embassy English Student Dashboard

"Progress" Means achieving or exceeding your Target Level

"Study Plan" Means the expected improvement in your English over the duration of your course to go from the Entry Level to the Target Level as recorded on My Embassy English Student Dashboard

"Target Level" Means the level of English you will aim to finish your course with (taking into account your Entry Level and chosen course), as agreed with you on or around the first day of your course and recorded as your target level on My Embassy English Student Dashboard

19.1 Subject to clause 19.2 below, if on your final assessment you do not Progress, you will be entitled, at your option, to either:

- 19.1.1 a refund of a proportionate amount of your tuition fee calculated from the date your English level was last below your Study Plan until the date of your final assessment; or
- 19.1.2 Additional lessons at no additional tuition cost until you Progress (subject to you having a legal right to continue your studies).

19.2 The options set out in 19.1 shall only apply if and when the following apply:

- 19.2.1 Your course is either the Standard or Intensive General English course for at least 12 consecutive weeks,
- 19.2.2 Your attendance at classes is 95% or higher,
- 19.2.3 You have completed all homework assignments on time,
- 19.2.4 You have completed all weekly unit reviews,
- 19.2.5 You have completed all tests on time as part of your Study Plan; and
- 19.2.6 You have taken advantage of all additional support that may have previously been offered to you where your English has been identified as behind your Study Plan

### 20. Data Protection

Any information provided to Embassy English may be held on computer and shall be used in accordance with its data protection registration and the national data protection laws applicable. Embassy English may disclose appropriate personal data, including sensitive personal data of a medical nature, to relevant Embassy English staff and third parties where there is a legitimate need or obligation to do so. We will not share sensitive information about students to any third party without their consent unless there are exceptional circumstances, such as when the health and safety of student and others is at risk or where the law requires us to do so. Our Privacy Policy is available on the Embassy English website.

### 21. Further Information: Australia

- ESOS Framework: The Australian Government wants overseas students in Australia to have a safe, enjoyable and rewarding place to study. Australia's laws promote quality education and consumer protection for overseas students. These laws are known as the ESOS Framework and they include the Education Services for Overseas Students (ESOS) Act 2000 and the National Code, and Tuition Protection Service (TPS). Visit the website <https://internationaleducation.gov.au/Regulatory-Information/Pages/Regulatoryinformation.aspx> for Education Services for Overseas Students (ESOS) Legislative Framework/Regulations and <https://tps.gov.au> for an overview of the Student Tuition Protection Service (TPS). A student who has any concerns about these matters after arrival at Embassy English, should contact the Centre Director.
- Information provided may be made available to Commonwealth and State agencies and the TPS Administrator of the Tuition Protection Service; [administrator@tps.gov.au](mailto:administrator@tps.gov.au), as part of our obligations under the ESOS Act 2000 and the National Code.

- Each student must notify the campus of any change in their contact details or address while enrolled in the course.
- All courses offering fewer than 24 lessons (20 hours) per week are not available to student visa holders.
- CRICOS Provider Name: Study Group Australia Pty Limited. CRICOS Provider Code: 01682E.
- Any school-aged dependants accompanying overseas students to Australia will be required to pay full fees if they are enrolled in either a government or non-government school.
- Students studying in Queensland who are concerned about the conduct of a provider may contact officers of the Queensland Department of Education; the Chief Executive of that Department has power under the Education (Overseas Students) Act to suspend or cancel the registration of a provider or a course within that state.
- Average living expenses Australia: AUD20,000 per year. New Zealand: NZD18,000 per year.

### 22. Further Information: New Zealand

- Protection of Student Fees: Fees paid by students will be fully protected by a Bank Guarantee and cash held by an independent Trustee. In the unlikely event of the Embassy English school closing prior to the conclusion of courses, school fees will be refunded on a pro-rata basis by the Trustee.
- If students experience difficulty with procedures in New Zealand, they may contact the Qualifications Authority at PO Box 160, Wellington. Telephone: +64 4 802 3000.
- Code of Practice: Embassy English has agreed to observe and be bound by the Code of Practice for the Pastoral Care of International Students published by the Minister of Education. Copies of the Code are available on request from this institution or from the New Zealand Ministry of Education website [www.minedu.govt.nz](http://www.minedu.govt.nz). The Code of Practice also establishes that International Educational Appeal Authority (IEAA) and the Review Panel receive and adjudicate on student complaints. Their email address is: [info.ieaa@minedu.govt.nz](mailto:info.ieaa@minedu.govt.nz)
- Immigration: Full details of visa and permit requirements, advice on rights to employment in New Zealand while studying, and reporting requirements are available through the New Zealand Immigration Service, and can be viewed on their website at [immigration.govt.nz](http://immigration.govt.nz).
- Each student must notify Embassy English of any change to their contact details, accommodation type, and residential address.

### 23. Further information: USA

For students travelling as unaccompanied minors on flights to and from the USA, a one-way USD200 unaccompanied minor airport service fee will be charged.

### 24. Further information: UK

Embassy English (Brighton, Cambridge, Central London, Hastings, London Greenwich, and Oxford) is registered with the UKVI register of sponsors and its sponsor licence number is 8V1P5MAW1. This empowers Embassy English to issue Confirmation of Acceptance of Studies (CAS) at its discretion. Pocket money requests will incur a processing charge of GBP50. Courses with Standard 20 classes total 16 hours and 40-minutes of tuition per week, and with Intensive 28 total 23 hours and 20-minutes of tuition per week.

### 25. Force Majeure

Embassy English is not liable in the event where it is unable to fulfil any service to which it is contractually bound because of fire, natural disaster, acts of government, failure of suppliers or subcontractors, labour disputes, or other reasons which are outside its control.

### 26. Agents

All the above terms are applicable to direct students and agents unless variations are expressly agreed between the agent and Embassy English or their parent company, Study Group, in writing.

### 27. Updates to Terms and Conditions

All Terms and Conditions are subject to change. For the latest Terms and Conditions, please visit our website: [embassyenglish.com/global/terms-and-conditions](http://embassyenglish.com/global/terms-and-conditions)



## Study Tours



The only thing better than learning English and exploring a new city is doing it with your friends!

Embassy StudyTours provide personalised, bespoke programmes for groups. This can be anything from additional trips and excursions outside of the classroom to specialised classes, even in teacher training.

**Accommodation:** full or half board, host families or residential - please enquire about the range of accommodation available at your destination of choice.

**Minimum group size:** 10

**Age range:** From 8 years in certain centres

**Locations:**

**UK** - Brighton, Cambridge, Central London, Newland Park, Hastings, London Greenwich and Oxford

**North America** - Boston, Fort Lauderdale, Los Angeles, New York, San Diego and San Francisco and Toronto

**Australia and New Zealand** - Auckland, Brisbane, Melbourne, Surfers Paradise and Sydney

Learn more at [embassystudytours.com](http://embassystudytours.com)

## Embassy Summer



Educational adventures for Young Learners

Embassy Summer provides young learners with the experience of a lifetime: English language tuition plus a wide range of activities and excursions outside of the classroom.

Our activities and excursions also provide students with valuable life skills to encourage their curiosity, nurture their creativity and boost their confidence.

The Embassy Summer experience

- Amazing facilities throughout all of our locations in the UK, USA and Canada
- Juniors, groups and individuals
- All levels from Beginner to Advanced
- Accommodation in college and university residences as well as some homestay options
- Full activity programmes

Read more at [embassysummer.com](http://embassysummer.com)

## Embassy Academy



A traditional british boarding school experience with professionally taught courses

Enjoy a summer in a traditional boarding school environment where students will participate in engaging English classes in the morning and will benefit from the experience of professional coaches or teachers in their chosen sport or activity in the afternoon.

Courses include golf, football, dance and sailing - with professionally qualified coaches to help master the right skills and techniques for success.

The Embassy Academy experience

- Exclusive British boarding schools with great facilities
- Small English class sizes (maximum of 12)
- Professionally taught sport, arts and academic courses
- 11 courses to choose from
- Safe and secure environment with a staff to student on site ratio of 1:5
- Extensive all inclusive package of excursions and activity programme.

Learn more at [embassyacademy.com](http://embassyacademy.com)

## Practical Information

### Embassy support

Before you leave home we'll give you all the information you need about your travel, study and accommodation arrangements. We'll meet you at the airport and take you to your accommodation (for an additional transfer fee). We'll give you an Embassy handbook on your first day, containing all of the information you need. If you have any questions, our student services team will be on hand to help throughout your studies. We'll give you a telephone number to contact us in an emergency, 24 hours a day.

### Payment

If you're enrolling through a local representative, please make payment to them. If enrolling directly, please pay by direct bank transfer or credit card to Embassy. All bookings are subject to our terms and conditions. You'll find details on the enrolment form and on [embassyenglish.com](http://embassyenglish.com)

### StudyCare insurance

#### (UK, USA, Canada and New Zealand)

This is a comprehensive insurance plan specially created for international students. It will give you full protection from the day you travel. Full details are in the StudyCare insurance booklet, or online at [embassyenglish.com/studycare](http://embassyenglish.com/studycare)

### Overseas Student Health Cover (Australia)

As an international student on a student visa you are required to have Overseas Student Health Cover for the duration of your visa. It is important that your cover is maintained for the duration of your programme/s. A full list of prices is available online at [embassyenglish.com](http://embassyenglish.com).

### Confirming enrolment

We will confirm your enrolment by email, to you or your local representative.

### To enrol with Embassy

Contact your nearest Embassy representative or enrol directly online at [embassyenglish.com](http://embassyenglish.com). If this brochure hasn't provided the information you need, please contact our International Admissions Centre in the relevant country.

See the inside back page for contact details.



## Together we can make a difference

As part of Study Group, Embassy English is honoured to participate in Building Futures a non-profit initiative that provides educational opportunities in the developing world through a partnership with Plan International. Embassy staff and students participate in fundraising events throughout the year that help support our annual projects.

In 2016 we worked together to build a school in Anuradhapura, a district in northern Sri Lanka. By constructing a new primary school with two new buildings, improving access to water and sanitation, and delivering a range of teacher training and school management initiatives, this project is already improving the education opportunities for an estimated 413 boys and girls.

This year, Embassy English and Study Group partners will be working on a school project in the Sindhupalchowk District of Nepal.

To learn more please visit [embassyenglish.com/global/our-charity](http://embassyenglish.com/global/our-charity)



### Contact

**United Kingdom** – Admissions Centre  
1 Billinton Way, Brighton BN1 4LF, United Kingdom  
T +44 1273 339 400 F +44 1273 339 401  
E [iacuk@studygroup.com](mailto:iacuk@studygroup.com)

**United States** – International Admissions Centre  
41 West Street, Level 1, Boston, MA 02111  
T +1 857 362 8980 F +1 857 362 7336  
E [iacusa@studygroup.com](mailto:iacusa@studygroup.com)

**Canada** – International Admissions Centre  
80 Bloor Street West, 9th Floor  
Toronto, Ontario M5S 2V1  
T +1 416 413 0511  
E [iacusa@studygroup.com](mailto:iacusa@studygroup.com)

**Australia/New Zealand** – International Admissions Centre  
Level 2, 63 Oxford Street, Darlinghurst NSW 2010, Australia  
T +61 2 8263 1888  
E [anzembassybookings@studygroup.com](mailto:anzembassybookings@studygroup.com)

Study Group Australia Pty Limited  
CRICOS Provider Code: 01682E

Agents [embassyenglish.com/partners](http://embassyenglish.com/partners)  
Students [embassyenglish.com](http://embassyenglish.com)



Embassy English is part of Study Group, a global leader in preparing students for international academic success and rewarding careers through a life-changing learning experience. We offer customised programmes across higher, language and online education starting from High School to life-long learning. Study Group taught more than 73,000 students from 145 countries across the UK, Europe, USA, Canada, Australia and New Zealand in 2015.

To learn more, please visit [studygroup.com](http://studygroup.com)





Study Group Australia Pty Limited, Trading as Embassy English, National CRICOS Provider Code: 01682E.  
ACN 070 919 327 ABN 88 070 919 327



Accredited by the  
**BRITISH COUNCIL**  
for the teaching  
of English in the UK



ENGLISHUK  
member

New Zealand  
Qualification Authority



Please recycle this brochure after use.

